

BERLIN BULLETIN

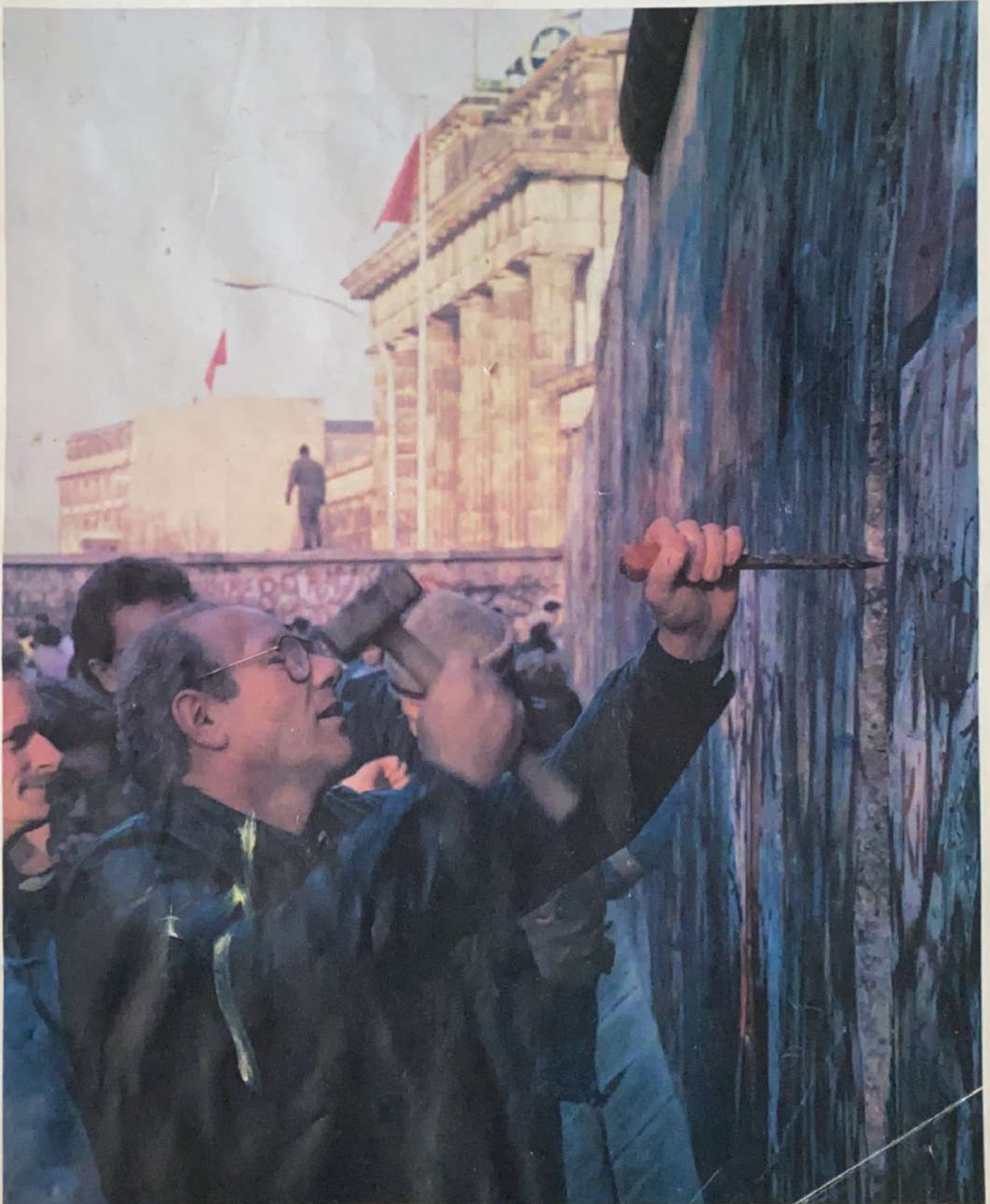


PUBLISHED BY EDUCATION BRANCH, HQ BERLIN INFANTRY BRIGADE FOR BRITISH FORCES, BERLIN

TELEPHONE: 309 43 94

FRIDAY, 17 NOVEMBER 1989

VOL. 40 - ISSUE No. 46





“SO EIN TAG
SO WUNDERSCHÖN WIE HEUTE”

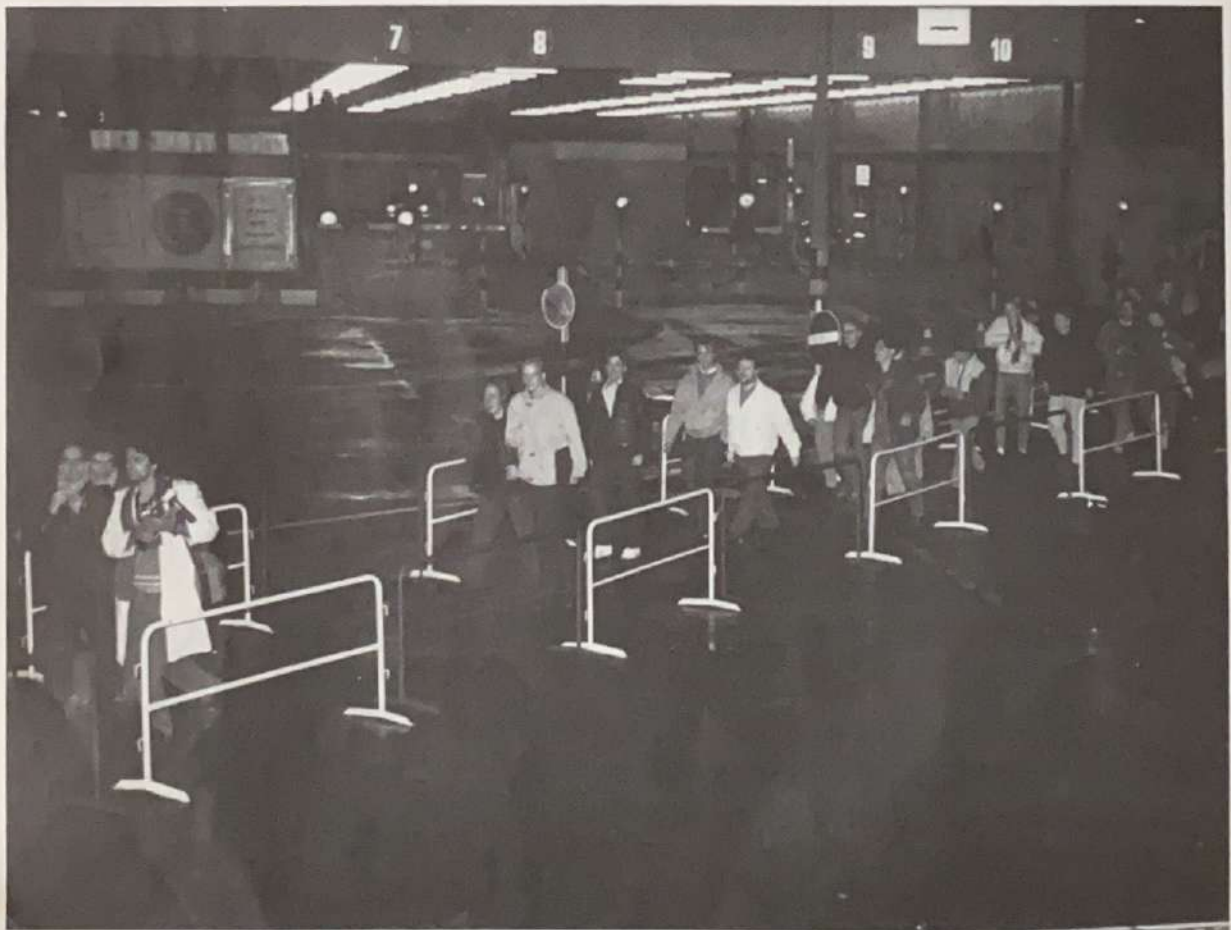
A Message from
GOC Berlin (British Sector)
Major General RJS Corbett

We are all very lucky to be living in Berlin at such an exciting time. The events of recent weeks have been of far-reaching political importance. The old-guard leadership of the German Democratic Republic has been swept from power. The Communist Party (the SED) recognises that it has lost the confidence of its people. Changes are being introduced and promised at breathtaking speed. The most dramatic was the decision to allow East Germans to travel freely to the West. At a stroke, the notorious Wall lost its original purpose.

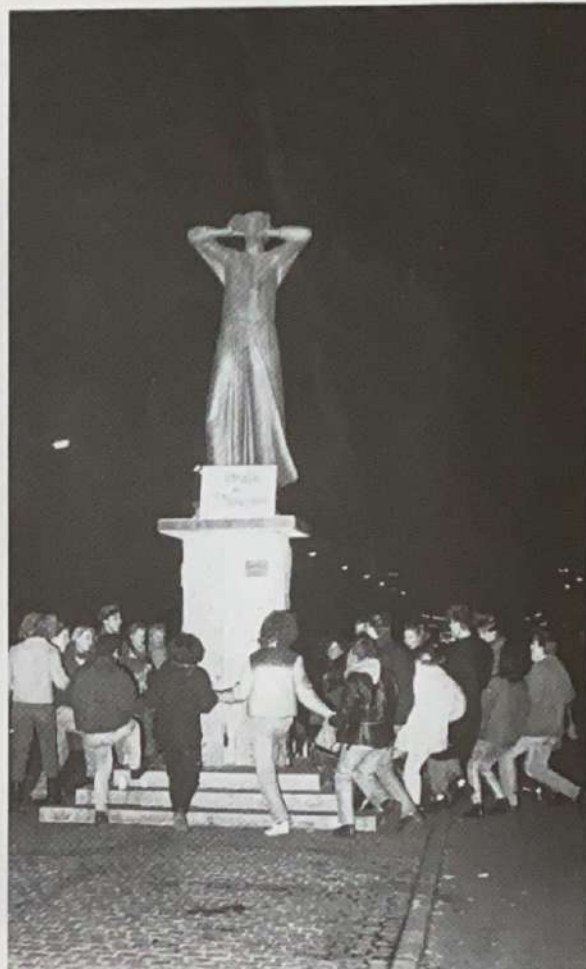
All of you will have seen on television screens and in the streets, tens of thousands of East Germans who, with disbelief and joy, flooded into the western part of this city over the weekend. We share in the enthusiasm with which all Germans have greeted the new freedom which the people have won from their authorities. Many of you have been involved in one way or another in providing assistance for those who have come across either to resettle in the West or simply to visit. Whether it is a matter of moving beds into a temporary facility or of providing hot drinks at a crossing-point, your efforts are very obviously appreciated both by the authorities in West Berlin and by the East Germans and East Berliners who have benefitted from your efforts. When the Governing Mayor spoke in the House of Representatives recently about the contribution of the Allies in this respect, his remarks prompted a spontaneous outburst of applause. Well done to you all – and thank you.

Of course some of you will wonder what the implications of all these events may be for the Allied role in Berlin. Our task is absolutely not over. We had a role in Berlin before the Wall was built in 1961. We certainly continue to have a role now. We all hope that the population in the GDR will come to enjoy stable democracy and economic prosperity as we do in the West, and that Berlin will no longer be an isolated city vulnerable to pressure and threats from the territory which surrounds it. But that day has not yet arrived. We continue to provide a reliable framework of security in which the Berlin authorities, as well as the Government of the Federal Republic and the Governments of the Western Allies, can seek ways of improving the situation in and around Berlin. We can regard the political prospects with some optimism. But there may well be setbacks. The speed of change around us brings with it uncertainty and potential instability. We continue to fulfil a vital role for the Berliners by providing an assurance of security in uncertain times.

The role which all of you play in this city is therefore just as important today as it was before the dramatic events of last week. Our task is to work in partnership with the people of Berlin, demonstrating that we are prepared to join with them in meeting the challenges, both political and practical, of the new situation. You have all responded splendidly to the demands which have been placed upon you. As your GOC, I want to thank each one of you and your families who support you and to say how much I look forward to continuing with you on the same path in this fascinating and crucial period in Berlin's history.







Cheerful Chaos as Berlin Celebrates

“Tremendous”, “unbelievable”, “so sudden” – those were the words on the lips of hundreds of thousands of onlookers, from both West and East, in Berlin on Thursday evening, 9 November 1989, as around them history was made with the breaching of the infamous symbol of a divided Europe, the Berlin Wall.

The unexpected decision of the East German authorities to permit their people free travel, announced in the early evening, brought a torrent of East Berliners to the existing, carefully-controlled crossing points. With a further crowd of West Berliners and visitors from the other side, new crossing capacity had to be provided, and within hours sightseers in the City and millions of television viewers were watching the amazing spectacle of bulldozers tearing out sections from what until then had been, in the propaganda of the East, “the great anti-facist protective barrier”.

Streets closed off with the building of the Wall in 1961 – albeit only a few of them – were suddenly open again. Overjoyed Germans from East and West hugged and kissed one another as those in the East were dramatically free to see for the first time the other side of their own City.



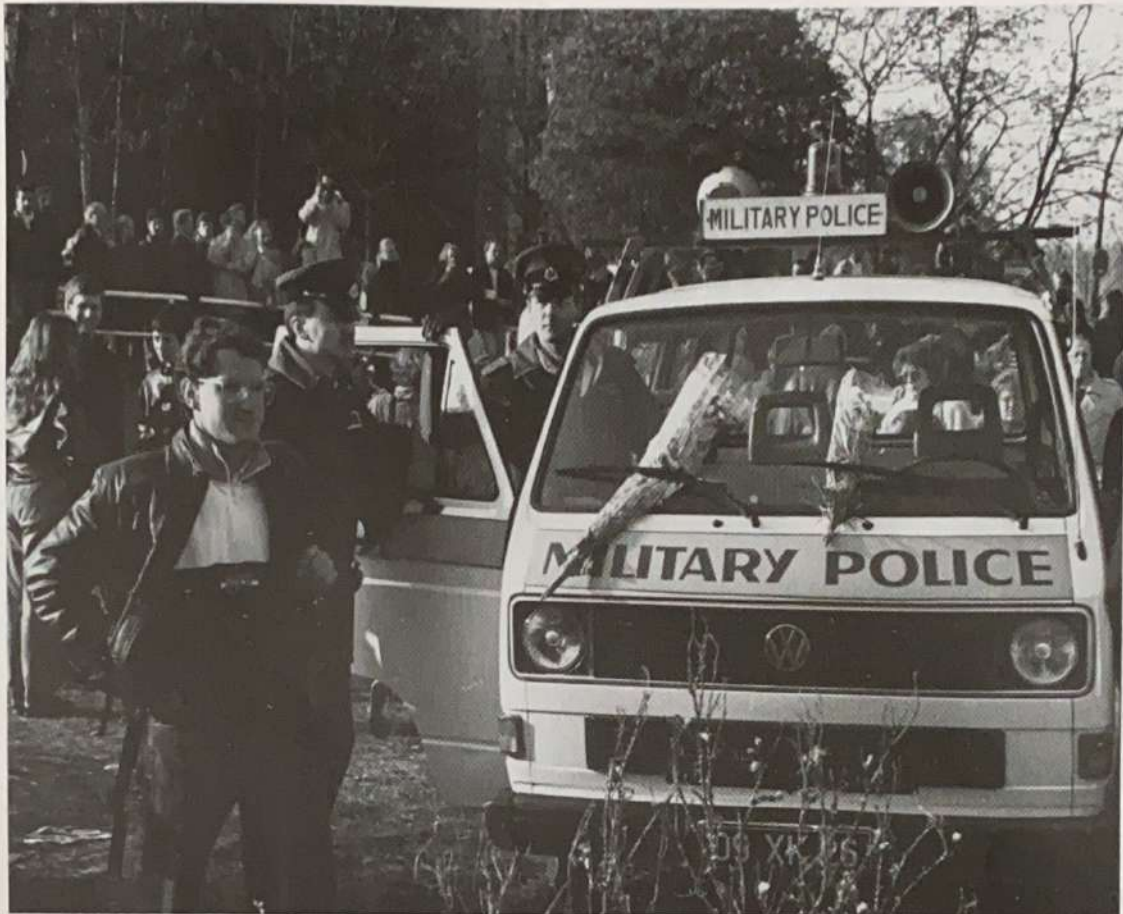












For the British, American and French Allies in the Western Sectors of the 'Divided City', there was the pleasure of simply being here at such a momentous time, to share the sheer delight of Berlin's citizens. For those who thought more deeply, there was quiet satisfaction that Allied steadiness and resolve over the period since the Second World War, through the dark days of the Blockade as well as in more recent years of gradual lessening of tension, seems finally to have won through.

Possibly closest witnesses of all to the amazing happenings at the Wall were men of 2nd Regiment, Royal Military Police, who had the task of keeping the British Commandant and the British HQ informed of what was taking place within the British Sector. While day-to-day policing in Berlin, and other local administration, is long since in the hands of the local authorities, the three Commandants retain overall responsibility for security in the Western Sectors and therefore this was an important link.

RMP NCOs along the three kilometres of Wall bordering the British Sector radioed reports in wonder on the flood of East Berliners, on foot and in the tiny Trabant cars familiar to everyone who has visited their country, passing through the famous Checkpoint Charlie and later, as the bulldozers completed their work, the new crossing at Potsdamer Platz.









Thousands upon thousands of people gathered in front of the Brandenburg Gate, most poignant symbol of the division of the City, to climb on the Wall and chip pieces out of it until finally the East German authorities had had enough and moved their border guards into positions actually standing on the Wall.

On the Western outskirts of the British Sector, the fortifications known to the military community as the 'Wire' came down to provide a further crossing point at Falkenseer Chaussee. And at Staaken, a route used by refuse vehicles was opened to long queues of cars. In total, nine new crossings were opened.

All over the City, but especially in the central areas, traffic came to a standstill as roads simply choked under the pressure. In the end many drivers abandoned their vehicles in the euphoria, in total disregard of the difficulty of retrieving them later.

Many members of the British community, fortunate enough not to be working over the weekend, were able to join the crowds in the joyous celebrations on the Kurfürstendamm, the main shopping and entertainment area of the City. No one in Berlin over that weekend will ever forget being here as history was made all around them.







Front Cover: Hendrik Pastor
Photographs by Hendrik Pastor and Michael Klinec

BERLIN BULLETIN



PUBLISHED BY EDUCATION BRANCH, HQ BERLIN INFANTRY BRIGADE FOR BRITISH FORCES, BERLIN

TELEPHONE: 309 43 94

FRIDAY, 17 NOVEMBER 1989

VOL. 40 - ISSUE No. 46

MOVING TIMES AT THE HAVEL SCHOOL

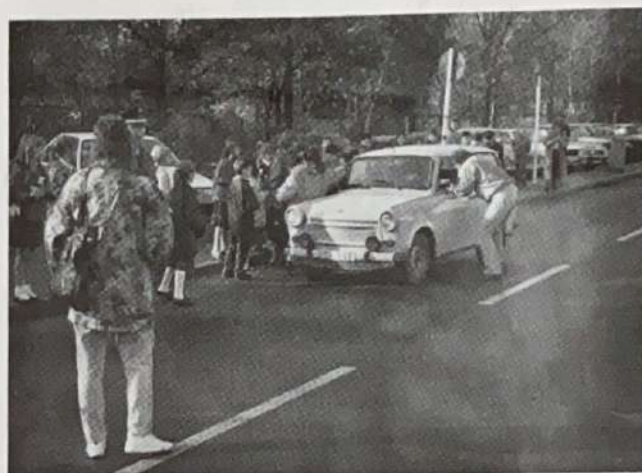


The events of the last few days in Berlin will be remembered for a very long time by all who are privileged to be in the city at this time. However, last Friday was a very moving experience for pupils at The Havel School.

At the beginning of the school day, over 600 pupils and staff gathered in the school hall for a Service of Remembrance. Appropriate hymns and readings took place, and a special letter from Jim Goodson, aged 105, who is a resident of The Royal Star and Garter Home, gave everyone something to think deeply and seriously about. A period of silence was observed as a memory of the freedom which we now enjoy as a result of others' sacrifices.

It is not every day that you find yourself standing in the midst of history as it unfolds around you.

The staff at The Havel School felt that the events which occurred at the end of last week presented too good an opportunity to miss, and were determined that they would do whatever possible to ensure that the children would always remember that they were among those fortunate few who were in Berlin when 'The Wall' was breached. Following a couple of telephone calls, we were grateful that 62 Transport and Movement Squadron RCT could provide us with a coach for the morning, without our normal prior booking procedures. Parties of our youngest pupils, this year called Year 5 under the National Curriculum Council's recommendations, eagerly boarded the bus. In total, over 130 children were to have an experience of a lifetime.



Pausing only to buy flowers at the Garden Centre, where a further 50 were donated to our cause by a tearful sales assistant, we were off to the Staaken Crossing Point between the GDR and West Berlin. When they arrived, their teachers described the background and set the scene. The plan was that each child would have the opportunity to present a flower of greeting to a person coming across what had been until fifteen hours earlier a closed border.

(Continued overleaf)



EARLY DEADLINE NEXT WEEK - 1200 HRS MONDAY, 20 NOVEMBER

Moving Times at The Havel School

(Continued from the previous page)

The reality proved to provide an even more moving experience. We were privileged to witness many scenes of tremendous joy and beauty as visitors streamed across the once daunting boundary. One man stopped his car in the car park just behind where we stood – the first place he could legally stop after crossing the line. Once our children had overcome their initial reticence, he found himself swamped with flowers. And all the while he stood staring at his bleak surroundings as if he were in the finest palace saying over and over again – "This is my first time!" Another Trabant responded to our waves and stopped by us and as the children joyously gave their flowers, the moment proved too much for the young couple in the car, and they both wept openly.

Later we went right down to the actual crossing point and joined in the celebrations with the many Berliners who had come to meet friends and relations as they poured through.

Meanwhile, a very small number of senior pupils were taken by private car to the area near the Brandenburg Gate. Here they witnessed similar scenes of joy. Videos were made at both locations and these will be used as school resources for further learning.

Our pupils have witnessed extremely moving scenes as some of the residents from the GDR crossed into West Berlin for the first time in 28 years. We have precious memories which we will never forget.

DAE



Birth Announcements BMH Berlin

BROWNE. To Sgt and Mrs. Browne, 14 Berlin Fd Wksp REME, a daughter, on 12 October 1989.

BALL. To Sgt and Mrs. Ball, 1 RWF, a son, Thomas William, on 7 November 1989.

Need Information?

HIVE



BERLIN
Summit House
(opposite YMCA Papershop)

Open:
Tuesday – Saturday 0930–1400 hours

Tel. 309 51 43



CHURCH OF ENGLAND (Anglican)

ST. GEORGE'S CHURCH
Preussenallee, Charlottenburg
Padre: The Revd. John Andrews CF
Tel. 309 41 44 (Office) 309 43 87 (Home)

Sunday, 19 November – 6 before Christmas –
0800 hrs Holy Communion
0900 hrs Choir Practice
1000 hrs Parish Communion
Sponsored by BFBS
1000 hrs Sunday School
NB: The normal route bus passes the BMH Berlin at 0928 hours and comes on to the Church.

Tuesday, 21 November
1015 hrs Holy Communion

ST. ANDREW'S CHURCH
Montgomery Barracks
Padre: The Revd. Stephen Robbins CF
Tel. 309 71 30 (Office) or 309 71 09 (home)

Sunday, 19 November
0800 hrs Holy Communion
0945 hrs Morning Prayer
0945 hrs Sunday School

ALL SAINTS' CHURCH – RAF Gatow
Padre: The Revd. Ian Greenhalgh
Tel. 309 25 13 (Office) or 309 25 61 (Home)

Sunday, 19 November – 6 before Christmas
0900 hrs Holy Communion
1030 hrs Holy Communion and Sunday School
1830 hrs Evening Prayer

Friday, 24 November
1200 hrs Friday Lunch

The Lord is my strength and song,
He is my salvation (Is 12¹)

HOSPITAL SERVICES
ST. LUKE'S CHAPEL
BMH BERLIN
Padre: The Revd. Stephen Robbins CF
Tel. 309 71 30 (Office) or 309 71 09 (Home)

Saturday, 18 November
1800 hrs Holy Mass

Wednesday, 22 November
1800 hrs Evening Service

All Services in the BMH are open to staff, patients and anyone else who wishes to come.



CHURCH SERVICES



ROMAN CATHOLIC CHURCH

Father Timothy Forbes Turner CF (RC) Tel. 309 67 50
Father Claus Hoffmann SJ OCF (RC) Tel. 261 58 81

Saturday, 18 November
1800 hrs Holy Mass
St. Luke's Chapel, BMH Berlin
(Fifth Floor)
1830 hrs Holy Mass (Serving Gatow and Kladow)
St. Joseph's Church, RAF Gatow

Sunday, 19 November
0930 hrs Holy Mass St. Margaret's Church,
Wavell Barracks (Coffee is served
after Mass)
1115 hrs Holy Mass St. George's Church with
St. David's Chapel, Preussenallee,
Charlottenburg
1830 hrs Holy Mass (serving Gatow and Kladow)
St. Joseph's Church, RAF Gatow

CONFESSIONS

As published in the Newsletter available in church porches.

FREE CHURCHES

ST. MARGARET'S CHURCH
Brooke/Wavell Barracks
Padre: The Revd. Brian Richards CF
Tel. 309 34 43 (Office) or 309 52 62 (Home)

Sunday, 19 November
1115 hrs Parish Communion

TRINITY CHURCH
RAF Gatow – Amenities Centre
Education Block (Upstairs)
Padre: The Revd. Frank Sykes
Tel. 309 24 01 (Office) or 309 35 48 (Home)

Sunday, 19 November
1015 hrs Preparation for Worship
1030 hrs Morning Worship or Holy Communion
1030 hrs Sunday School (Crèche available)
(followed by refreshments)
2000 hrs Fellowship Evening

Fridays
1800 hrs Padre's Hour

WESLEY HOUSE CHAPEL
Klosterstrasse 18/20, Spandau (next to BP Garage)
Padre: The Revd. Frank Sykes
Tel. 309 35 48

Sunday, 19 November
1800 hrs Prayer Meeting
1830 hrs Informal Evening Service
(followed by refreshments)

Mondays
1900 hrs Stamp Club

Wednesdays
1800 hrs Padre's Hour
1900 hrs Guitar Workshop

Thursday
1900 hrs Fellowship Group

**Every First Sunday in the Month at Trinity Church
and Wesley House in the Chapel**
Holy Communion with the opportunity for the laying on
of hands for healing (wholeness of body, mind and spirit).

BULLETIN BOARD

● Berlin Branch PPA

Are you interested in a Post Basic Course to be held on 25 and 26 November 1989? If so contact Branch Tutor Mrs. McNamara for further details on 309 37 01, Monday to Friday, between 0930 and 1230 hours.

● PPA Christmas Bazaar

Come along to St. George's Hall on Saturday, 18 November at 1400 hours. Visit Santa and have some fun, and at the same time you'll be supporting the Playgroups.

● Sale at Wesley House

The sale at Wesley House is now on, with 25% off all marked prices of Lladro, Hümml and other porcelain.

● Santa Special

Make your Children's Christmas Party special. Invite Santa and his Snowmen to distribute your presents. The cost is only DM 50 which will be donated to our charity for handicapped children. Tel. Sgt Ansley on 309 25 50. Book early to avoid disappointment!

● Mothers and Mothers To Be

Are you breast-feeding and need support? Do you feel you can help others with breast-feeding problems?

Would you like to breast-feed but are unsure how to go about it?

Why don't you pop in for a coffee and a chat to our Breast-Feeding Support Group. We aim to advise and discuss all aspects of breast-feeding.

Meetings are held every fortnight, on a Monday, at the Community Centre Darbystrasse, from 1330 to 1430 hours.

Contact Saran Buckingham on 309 35 35 for more details.

● Wargaming News

Wargame Demonstration

There is a demonstration game at the Pegasus shop at Dernburgstrasse 56, Charlottenburg (near the ICC) on Saturday, 25 November, from 1000 hours.

● Wives' Club Security Presentation

All Wives' Club representatives should be aware that 3 Int & Sy Coy now have a briefing package entitled, 'The Security Threat in Berlin', which has been specifically designed for presentation to Service Wives.

For further details please telephone 309 43 83 (during working hours).

Articles submitted for this issue of the Berlin Bulletin will be published next week.

Early Deadline

The Berlin Bulletin office will be closed on **Wednesday, 22 November.**

The deadline for entries in the Berlin Bulletin will, therefore, be

Monday, 20 November at 1200 hours.

Late entries can not be accepted!

The Berlin Bulletin will be published as usual on **Friday, 24 November.**

● British Berlin Bridge Club

The British Berlin Bridge Club meets every Tuesday evening at 1900 hours in the Imperial Club, third floor, Summit House. If you would like a very enjoyable evening of Duplicate Bridge, please come along and join us. Bar facilities are available. For further information please contact Mrs. Lesley Cole on 365 72 75.

● Training Opportunities in Berlin

If you are aged between 16 and 19 years of age and are a dependant (married or single) of a Serviceman or UK based civilian, YTS can offer you the chance to gain work experience and relevant qualifications to compete in today's employment market.

In BFG it can, in fact, be possible to be on YTS up to the age of 21 years. Depending on when you left school, you may be entitled to a one or two year training programme, though you are free to leave at any time, to take up permanent employment of example. We can offer a planned programme of work experience and high quality training in a variety of fields, including Admin / Clerical and Office Services, Vehicle Mechanics, Catering, Sport Recreation and Leisure, Media etc.

If you would like more information on YTS Training for Skills, please contact the Co-ordinator, Mrs. Jane Sadler, tel. 309 37 50 or call into the YTS office, in the Education Centre, Smuts Barracks (room 205).

● Thrift Shop News

The Thrift Shop is now open from 0945 hours until 1145 hours every Monday, Wednesday and Friday. Saturday openings remain the same, that is the second Saturday of each month from 1000 hours until 1200 hours.

● RAF Gatow SIF Shop

The SIF Shop, formerly known as the PSI Shop, is now under new management. The shop is open weekday mornings from 0930 to 1300 hours and on Mondays, Wednesdays and Fridays from 1830 to 2030 hours (the Shop is open on Tuesdays, Thursdays and Saturdays from 1800 to 1930 hours for video hire and returns only).

The SIF Shop sells a wide range of goods including: perfumes, cosmetics, sportswear, jewellery, photographic equipment, hi-fi and electrical goods and toys. Other goods may be available by special order.

The shop is situated inside the main gate to the left of the Guardroom! There is ample car-parking right outside the shop.

● Relate Counselling Service

From 1 November 1989, the Relate Counselling Service will have two contact telephone numbers: 309 53 10 and 309 66 62. 309 53 10 will be answered during office hours by an appointments secretary who will arrange an appointment for you.

Allied Coffee Morning

This month's Allied Coffee Morning will be hosted by us, the British! It'll take place on Tuesday, 21 November at 1000 hours at the Villa Lemm, by kind invitation of the British Commander's wife, Mrs. Corbett.

It would be nice if more people than usual could come along this month – to give support *and* enjoy yourselves!

Please contact your Wives' Club or Josephine Arengo-Jones on 309 56 32 for further information.

German Survival Phrases

For those people newly arrived in Berlin, or indeed for anyone wishing to master those essential German words and phrases which make life so much easier, 46 AEC has produced a card printed with a selection of some fifty phrases (including help on pronunciation).

The Language Wing of 46 AEC has also produced a cassette tape to go with the card and both are now available.

If you would like a copy of the card and the tape, please send a self-addressed envelope and a blank C60 cassette tape to:

The Language Wing, 46 AEC, BFPO 45.

BULLETIN BOARD

● Berlin Branch PPA

Are you interested in a Post Basic Course to be held on 25 and 26 November 1989? If so contact Branch Tutor Mrs. McNamara for further details on 309 37 01, Monday to Friday, between 0930 and 1230 hours.

● PPA Christmas Bazaar

Come along to St. George's Hall on Saturday, 18 November at 1400 hours. Visit Santa and have some fun, and at the same time you'll be supporting the Playgroups.

● Sale at Wesley House

The sale at Wesley House is now on, with 25% off all marked prices of Lladro, Hümml and other porcelain.

● Santa Special

Make your Children's Christmas Party special. Invite Santa and his Snowmen to distribute your presents. The cost is only DM 50 which will be donated to our charity for handicapped children. Tel. Sgt Ansley on 309 25 50. Book early to avoid disappointment!

● Mothers and Mothers To Be

Are you breast-feeding and need support? Do you feel you can help others with breast-feeding problems?

Would you like to breast-feed but are unsure how to go about it?

Why don't you pop in for a coffee and a chat to our Breast-Feeding Support Group. We aim to advise and discuss all aspects of breast-feeding.

Meetings are held every fortnight, on a Monday, at the Community Centre Darbystrasse, from 1330 to 1430 hours.

Contact Saran Buckingham on 309 35 35 for more details.

● Wargaming News

Wargame Demonstration

There is a demonstration game at the Pegasus shop at Dernburgstrasse 56, Charlottenburg (near the ICC) on Saturday, 25 November, from 1000 hours.

● Wives' Club Security Presentation

All Wives' Club representatives should be aware that 3 Int & Sy Coy now have a briefing package entitled, 'The Security Threat in Berlin', which has been specifically designed for presentation to Service Wives.

For further details please telephone 309 43 83 (during working hours).

Articles submitted for this issue of the Berlin Bulletin will be published next week.

Early Deadline

The Berlin Bulletin office will be closed on **Wednesday, 22 November.**

The deadline for entries in the Berlin Bulletin will, therefore, be

Monday, 20 November at 1200 hours.

Late entries can not be accepted!

The Berlin Bulletin will be published as usual on **Friday, 24 November.**

● British Berlin Bridge Club

The British Berlin Bridge Club meets every Tuesday evening at 1900 hours in the Imperial Club, third floor, Summit House. If you would like a very enjoyable evening of Duplicate Bridge, please come along and join us. Bar facilities are available. For further information please contact Mrs. Lesley Cole on 365 72 75.

● Training Opportunities in Berlin

If you are aged between 16 and 19 years of age and are a dependant (married or single) of a Serviceman or UK based civilian, YTS can offer you the chance to gain work experience and relevant qualifications to compete in today's employment market.

In BFG it can, in fact, be possible to be on YTS up to the age of 21 years. Depending on when you left school, you may be entitled to a one or two year training programme, though you are free to leave at any time, to take up permanent employment of example. We can offer a planned programme of work experience and high quality training in a variety of fields, including Admin / Clerical and Office Services, Vehicle Mechanics, Catering, Sport Recreation and Leisure, Media etc.

If you would like more information on YTS Training for Skills, please contact the Co-ordinator, Mrs. Jane Sadler, tel. 309 37 50 or call into the YTS office, in the Education Centre, Smuts Barracks (room 205).

Allied Coffee Morning

This month's Allied Coffee Morning will be hosted by us, the British! It'll take place on Tuesday, 21 November at 1000 hours at the Villa Lemm, by kind invitation of the British Commander's wife, Mrs. Corbett.

It would be nice if more people than usual could come along this month – to give support *and* enjoy yourselves!

Please contact your Wives' Club or Josephine Arengo-Jones on 309 56 32 for further information.

● Thrift Shop News

The Thrift Shop is now open from 0945 hours until 1145 hours every Monday, Wednesday and Friday. Saturday openings remain the same, that is the second Saturday of each month from 1000 hours until 1200 hours.

● RAF Gatow SIF Shop

The SIF Shop, formerly known as the PSI Shop, is now under new management. The shop is open weekday mornings from 0930 to 1300 hours and on Mondays, Wednesdays and Fridays from 1830 to 2030 hours (the Shop is open on Tuesdays, Thursdays and Saturdays from 1800 to 1930 hours for video hire and returns only).

The SIF Shop sells a wide range of goods including: perfumes, cosmetics, sportswear, jewellery, photographic equipment, hi-fi and electrical goods and toys. Other goods may be available by special order.

The shop is situated inside the main gate to the left of the Guardroom! There is ample car-parking right outside the shop.

● Relate Counselling Service

From 1 November 1989, the Relate Counselling Service will have two contact telephone numbers: 309 53 10 and 309 66 62. 309 53 10 will be answered during office hours by an appointments secretary who will arrange an appointment for you.

German Survival Phrases

For those people newly arrived in Berlin, or indeed for anyone wishing to master those essential German words and phrases which make life so much easier, 46 AEC has produced a card printed with a selection of some fifty phrases (including help on pronunciation).

The Language Wing of 46 AEC has also produced a cassette tape to go with the card and both are now available.

If you would like a copy of the card and the tape, please send a self-addressed envelope and a blank C60 cassette tape to:

The Language Wing, 46 AEC, BFPO 45.

BULLETIN BOARD

309 66 62 is an Ansaphone available at all times and cleared regularly by a counsellor.

It has been felt for some time that people suffering nervousness and anxiety because of a personal problem are somewhat devastated when confronted by an answering machine, therefore we feel sure that the gentle, helpful manner of our appointments secretary will make it easier for clients to use the service. In UK there are long waiting lists to see Relate (Marriage Guidance) counsellors but here in Berlin it is usually possible to be given an appointment within a week.

Counselling is for anyone, married, single or divorced who needs a quiet hour to talk over a relationships problem.

● Holiday Closures BFPO

The Forces Post Offices at the Olympic Stadium and RAF Gatow will be closed on Wednesday, 22 November due to an official holiday. Newspapers will arrive as normal and be distributed as for a Sunday.

Group Practice BMH Berlin

The Medical Centre will be closed on 22 November for a German Public Holiday. Urgent cases may attend the Casualty Department at 1000 or 1800 hours when a doctor will be in attendance. Outside these times only emergencies will be seen. Real emergencies may attend at any time.

When the Medical Centre is shut patients are welcome to telephone the Casualty Nurse on 309 66 13 to ask for advice, or if that department is busy, contact the main hospital Reception on 309 66 32.

● Visit of Hamburg-Münchener Ersatzkasse

A representative of the Hamburg-Münchener Ersatzkasse will be at the PCLU on Wednesday, 29 November between 1400 and 1500 hours. Employees who are insured with this company can use this opportunity to ask any questions relating to health insurance and maternity benefits. Booklets to be used for medical and dental attention can also be picked up.

● RAF Gatow Blood Donor Session

A Blood Donor Session will be held in The Havel School gymnasium on Thursday, 23 November from 0900 to 1600 hours.

All existing donors are encouraged to attend. New donors will be most welcome. **GIVE BLOOD - SAVE A LIFE!**

● Do you have a special talent or skill?

If so, 46 AEC would like to hear from you. Ring 309 34 45 for more details.

● The Allied Carol Service Tickets

The Allied Carol Service will take place at the Blue Church on 12, 13 and 14 December 1989. Applications for tickets for this year's Allied Carol Service should be made through Unit Churches and Sector Chaplains.

● Snippets you ought to know

The policy on visiting East Berlin has not changed. You are free to visit under the normal rules.

Recent visitors have not experienced problems in paying with East Marks. If in doubt, ask.

What if you are involved in an accident in West Berlin with a Trabant? All visitors from the East are meant to be covered by GDR State Insurance. However, claimants have experienced difficulties and the best course of action is to have a fully comprehensive, protected policy.

● Job Vacancies

14 Indep PCLU RPC have the following vacancies and interested applicants should apply in person to the PCLU Recruiting Office as soon as possible. These posts are only suitable for Dependants.

NAAFI

Officers' Club - Waitress, 15 hours a week (lunchtimes).

JRC Brooke/Wavell Barracks - Club attendants, part-time, 25 hours a week.

JRC Smuts Barracks - Salesgirl, part-time, 20 hours a week. Bar assistant, part-time, 20 hours a week. Senior Club Attendant, part-time, 20 hours a week. Bar assistant, 18 hours a week.

JRC Olympic Stadium - Club attendant, part-time, 21 hours a week.

JRC Summit House - Cleaner, part-time, 18.5 hours a week.

NAAFI Shopping Centre - Shop Assistants, part-time, 24 hours a week.

Airbridge Club - Cleaner, part-time, 25 hours a week. Chargehand, full-time, 47 hours a week.

Families Shop Gatow - Cleaner, part-time, 20 hours a week.

Lollipop Lady for Gatow School, part-time, 12 hours a week.

TOCH Services - Buffetier, 40 hours a week. BMH Berlin - Dental Surgery Assistant, full-time. Cleaners, part-time, early shifts.

Chambermaid, part-time, 25 hours a week, is required for a Senior Officer's Residence in the Spandau/Gatow area.

BMG Berlin - Cleaners, part-time, 25 hours a week.

62 Tpt & Mov Sqn RCT - Bus Escorts, part-time, required from the end of November. Ladies should be living in the North Spandau Area.

Yoga Instructor

46 AEC requires a Yoga Instructor for the Spring Term beginning 15 January 1990. If you

are interested please contact Margaret Radford on 309 34 45, any morning.

● SSAFA Wool Shop 5th floor, Summit House

Tel. 309 44 33

Wednesday & Friday 1000-1400 hrs
Every Saturday 1000-1300 hrs

Autumn/Winter Range Now in Stock

Paris Shadow Mohair, knits in shaded stripes. Lovely shades of golds and blues.

Elysee, a silky ribbon yarn, knits with Paris mohair. Beautiful patterns, as seen in this month's Prima magazine.

Orinoco, an Alpaca chunky knit. Patterns include Aztec designs.

New colours have been added to the Tanglewood and Paris mohair range. There are lots of new colours in the Corrine range, plus patterns for children and adults, so why not call in and have a look?

Wanted - anyone with a Singer computerized knitting machine to help a beginner get to know her machine.

Do you knit or sew for other people? Would you like to advertise? We now have a display board. Call in at the shop for more information.

● NAAFI Summit House New Opening Hours

As part of an experiment NAAFI Summit House extended its opening hours on Monday, Tuesday, Wednesday and Friday until 1730 hours and on Thursdays until 2000 hours.

The late night shopping on Thursdays has been a great success and will continue but, unfortunately, the half hour extension on the other days has not. Consequently, all departments in Summit House now close at 1700 hours.

The new opening hours are as follows:

Monday	0900-1700 hrs
Tuesday	0930-1700 hrs
Wednesday	0900-1700 hrs
Thursday	0900-2000 hrs
Friday	0900-1700 hrs
Saturday	0900-1600 hrs

● Thought of Christmas Presents yet?

Thought of Christmas Presents yet? If not, visit the 46 AEC Art Exhibition from 17 to 28 November. There you can see and buy paintings and prints by Karl-Heinz Möller, famous for his Italian and Berlin works.

Herr Möller opens his exhibition on Friday, 17 November at 1830 hours. Come and have a glass of wine and view the fine collection. All you buy will help SSAFA.

For more information ring 309 42 41.

● For the Record...

If you have made films or taken photographs of the events of last week - Army Public Information would like to hear from you. Tel. 309 43 95 for information.



THE BRITISH FORCES BROADCASTING SERVICE BERLIN AIRWAVES

Wall To Wall Coverage

It was, of course, the biggest news story of the decade, and BFBS Berlin was right in the middle of it. As the enormity of the East German decision to relax border restrictions sank in, the BFBS team was assembled and each team member given an area of the city to cover. The brief: "Something for the 1 o'clock news".

The lifting of border controls resulted in thousands of East Germans pouring in to taste the freedom of West Berlin, met by thousands of West Berliners coming to meet them. Not surprisingly traffic in town came to a virtual standstill, but somehow or other Patrick Eade managed to get to the Brandenburg Gate (he did his first reports from on top of the Wall there!), Alan Phillips reached Checkpoint Charlie, and found a telephone not occupied by another member of the media! Baz Reilly took to the air courtesy of 7 Flt AAC to report the graphic bird's eye view he had of the events below, whilst Robin Merrill got the reactions of Berliners – East and West alike – enjoying the carnival atmosphere along the Ku'Damm. Also in on the action were Cathy Hulett (Staaken Crossing) and Jamie Gordon (anchorman in the studio, and finding out the Allies' initial response to the events from COS Col Peter Lyddon).

As Baz says "...the atmosphere in the city was contagious"; it was like "midnight on New Year's Eve", someone said to him. Many people, too overcome with emotion, were lost for words.

Meanwhile the air in the BFBS office was electric – phones, faxes and telexes never stopped. Can we help IRN?

BBC Radio Leeds? Thames TV? BBC Radio Solent, based in Southampton, requested and instantly received a 10 minute question and answer session with Patrick Eade's actuality from the Brandenburg Gate. And naturally BFBS London was fed 'hot news' as soon as we had it. Then BBC Radio 1 rang to enquire if it might be possible for Simon Bates to present his Morning Show from our studios the following Monday...

Surprise turned to amazement as the news broke that new crossing points would be made in the Berlin Wall. Fresh in from interviewing Willi Brandt at the Brandenburg Gate and recovering his car from deepest Kreuzberg, Alan was sent off to Bernauer Strasse to cover the new breach in the wall there: The West Berlin fire service dismantling the viewing platform on the West, the East German guards and workmen demolishing the actual wall itself.

Meanwhile Baz and Patrick were compiling the evening report, including Mary Walker's news from the Ku'Damm that many of the shops there were accepting East Marks.

Come Saturday lunchtime the whole BFBS Berlin family was in the office, still buzzing with excitement and adrenalin. Even the junior sections of the Reilly and Eade households were there – but kept quiet by engineer Nick Bequet's secret stock of games for the BFBS/SSVC computer! Jan Reilly and Cheryl Eade did the honours in the food department: until then none of the team realised they had not had a proper meal since Thursday!

By now a clearer picture of what was happening over the city was beginning to emerge. An especially significant new crossing at Potsdamer Platz was to be opened at 8am on Sunday. Patrick was there – reporting from the Platz itself, a place where no civilian had safely been for more than a quarter of a century.

Simon Bates, his producer Kenton Allen and Executive Producer Stuart Grundy arrived from BBC Radio 1 on the Saturday night, and after a briefing in the Devon House Mess bar set off down town to collect material for Simon's Monday show.

On Sunday BFBS heard the thoughts of Britain's Ambassador to West Germany, Sir Christopher Mallaby, and from the Governing Mayor, Walter Momper. The GOC Major General Robert Corbett gave us the latest military sitrep, and BFBS Secretary June Wilde recounted her feelings as she and her Berliner husband Wolfgang saw the Glienicke Bridge open to all for the first time in over 40 years.

Finally, on Monday as most of the East Berliners returned home, and West Berlin's streets were emptied of Trabants and Wartburgs, Simon Bates took to the airwaves of BFBS and BBC Radio 1 in a simultaneous broadcast with his views and comments, and some excellent analysis by the BBC's Europe Correspondent Graham Leech.

In many ways, the events in the GDR have only just begun, but for BFBS the time has come to resume what might be called 'normal service'! None of the team though will ever forget the weekend the Wall came down.

BFBS is the radio division of the Services Sound & Vision Corporation. We broadcast on 98.8 MHz VHF.
Our Address: BFBS/SSVC Berlin, BFPO 45.
Tel. 309 52 65 (office), 309 54 41 and 309 52 89 (studio), 301 82 43 (fax).



TV — YOUR ENTERTAINMENT GUIDE — TV

Friday, 17 November

SSVC

- 1230 **For Schools:** Thinkabout.
- 1245 **For Schools:** Wondermaths.
- 1300 Animal Fair.
- 1310 Bangers and Mash.
- 1315 Playbus.
- 1335 Neighbours.
- 1400 News* and Weather.
- 1425 Take The High Road.
- 1450 P.S.I.
- 1515 Home and Away.
- 1535 **Children's SSVC** starting with: Two by Two.
- 1555 The Wombles.
- 1605 But can you do it on TV?
- 1625 The Ghost of Faffner Hall.
- 1655 Blue Peter.
- 1725 Countdown.
- 1750 Happy Days.
- 1810 Top of the Pops.
- 1840 News* and BFG Weather Report.
- 1855 Bob's Full House — new series.
- 1930 Coronation Street.
- 1955 Beadie's About.
- 2020 Challenge Anneka.
- 2105 Barbara Taylor Bradford's Act of Will.
- 2200 News* and BFG Weather Report.
- 2230 Blackadder Goes Forth.
- 2300 The Drowning Pool — film.
- 0045 Closedown.

AFN

- 0600 CBS Evening News.
- 0630 Sports Tonight.
- 0655 AM Notebook.
- 0700 ABC Nightline.
- 0730 Cartoons / Secret City / Kids Incorporated.
- 0835 Morning Stretch.
- 0905 Barney Miller.
- 0930 New Country.
- 1000 Frugal Gourmet.
- 1030 Wheel of Fortune.
- 1100 Entertainment Tonight.
- 1130 Jeopardy.
- 1200 ABC World News.
- 1230 Oprah Winfrey.
- 1320 General Hospital.
- 1405 Guiding Light.
- 1450 Cartoons / Teenage Mutant Ninja Turtles.
- 1530 AFN Video Jukebox Friday.
- 1600 The Today Show.
- 1625 **Today's Notes.**
- 1725 **Berlin Today.**
- 1800 **Headline News.**
- 1830 AFN Evening News.
- 1900 Charles in Charge.
- 1930 Mr. Belvedere.
- 1950 **Berlin Tonight.**
- 2000 Cheers.
- 2030 The Equalizer.
- 2120 **Berlin PM.**
- 2130 Arthur Hailey's Hotel.
- 2221 AFN Late Edition.
- 2240 T.B.A.
- 0025 Late Night with David Letterman.
- 0130 NBC Nightly News.
- 0200 The Tracy Ullman Show / Sport.

ARD

- 1715 News.
- 1725 Drei Damen vom Grill.
- 1750 **Berlin Report.**
- 1814 Falcon Crest.
- 1922 **Berlin Evening News.**
- 2000 International News.
- 2015 **Sport — Tennis:** Benefit Match: Boris Becker v Stefan Edberg.
- 2150 Economics Report.
- 2300 Comedy Show.
- 2325 Sports Report.
- 2350 Lady L — French film.

ZDF

- 1700 News.
- 1715 TV Journal.
- 1745 **Alt.**
- 1825 Hooperman.
- 1900 News.
- 1930 Press Report.
- 2015 Derrick.
- 2145 News.
- 2210 The Arts.
- 2250 **Sport — Football Highlights:** FC St. Pauli v Fortuna Düsseldorf and FC Nürnberg v FC Kaiserslautern.
- 2315 Heaven's Gate — American film.

III

- 1800 Hallo Spencer.
- 1830 Criminals and Victims — report.
- 1915 I'm not a Berliner — report.
- 2000 News.
- 2015 Europa Magazine.
- 2100 Châteauration.
- 2200 Chat Show.

Saturday, 18 November

SSVC

- 1000 **Children's SSVC** starting with: Percy Peeverly's Piertime Fun.
- 1030 The Real Ghostbusters.
- 1050 Lost in Space.
- 1140 The Noel Edmonds Saturday Roadshow.
- 1225 The Waitons.
- 1315 Grandstand.
- 1800 News* and BFG Weather Report.
- 1810 Pop Spot.
- 1840 Blind Date.
- 1925 'Allo 'Allo!
- 1955 Russ Abbot.
- 2025 All Creatures Great and Small.
- 2115 Saturday Matters with Sue Lawley.
- 2200 News* and BFG Weather Report.
- 2215 Smith and Jones in Small Doses.
- 2235 Tales of the Unexpected.
- 2300 Sing Country.
- 2330 Match of the Day.
- 0030 Soap.
- 0055 Closedown.

AFN

- 0600 CBS Evening News.
- 0630 Sports Tonight.
- 0700 Denver, The Last Dinosaur / Teenage Mutant Ninja Turtles / JEM/ Alvin and the Chipmunks / The Adventures of the Galaxy Rangers / Fun House / Mr. Wizard's World.
- 0950 The Laurel and Hardy Show.
- 1105 Entertainment Tonight.
- 1135 Wheel of Fortune.
- 1200 ABC World News.
- 1230 Eucorn Report.
- 1300 T.B.A.
- 1445 T.B.A.
- 1500 The Untouchables.
- 1600 WWF Primetime II.
- 1700 Mission Impossible.
- 1800 **Headline News.**
- 1830 Who's the Boss?
- 1900 21 Jump Street.
- 2000 T.B.A. / Sport / Saturday Night Live / Main Event / Sport George Slatter's Comedy Club / Grand Ole Opry Live.

ARD

- 1755 News.
- 1800 **Sports Report.**
- 1815 **Sport — Football.**
- 1900 **Berlin Evening News.**
- 2000 International News.
- 2015 Das Boot — film.
- 2255 **Draw for the Lotto Numbers.**
- 2300 News.
- 2315 Miami Vice.
- 2400 I tartari — Italian film.
- 0120 The Sea Wolf — American film (nc).

ZDF

- 1305 Music Show.
- 1350 European Universities — Padua.
- 1420 Der Mann im Strom — German film (nc).
- 1545 Artists — Swedish film.
- 1700 News.
- 1705 Knots Landing.
- 1810 Current Affairs Report.
- 1900 News.
- 1930 Mil Leib und Seele.
- 2015 Show.
- 2200 News.
- 2220 Sports Report.
- 2340 Heaven's Gate — American film.

III

- 1800 Sesame Street.
- 1830 International Cuisine — Germany.
- 1845 Lindenstrasse.
- 1915 Jawaharlal Nehru — film.
- 2000 News.
- 2015 Fortunes of War (1).
- 2110 Projections.
- 2240 Siegfried Lorenz sings Songs by Schumann and Schubert.

Sunday, 19 November

SSVC

- 1200 Programmes for Primary Teachers.
- 1215 **Children's SSVC** starting with: Puddle Lane.
- 1240 The Lone Ranger.
- 1305 Rapido.
- 1335 Sportsmaster.
- 1400 News* and Weather.
- 1410 The Bill Double Bill.
- 1455 Violent Saturday — film.
- 1625 The Match*.
- 1830 Comedy Classics: The Good Life.
- 1900 Highway.
- 1930 News* and BFG Weather Report.
- 1935 Catchphrase.
- 2000 Bread.
- 2030 Eastenders.
- 2130 Spitting Image — new series.
- 2155 Screenplay: The Attractions.
- 2300 News* and BFG Weather Report.
- 2315 Hooperman.
- 2340 Closedown.

AFN

- 0600 **Headline News.**
- 0630 A New Beginning.
- 0700 Catch The Spirit.
- 0730 Robert Schuller and the Hour of Power.
- 0825 Cartoons / Ducktales / Kids Incorporated.
- 0930 National Geographic Special: Entertainment This Week.
- 1030 Sports Tonight.
- 1130 Sports Tonight.
- 1200 **Headline News.**
- 1230 T.B.A.
- 1330 T.B.A.
- 1500 T.B.A.
- 1530 Star Search.
- 1630 America's Top Ten.
- 1700 Degraasi Jr. High.
- 1730 T.B.A.
- 1800 **Headline News.**
- 1830 Just in Time.
- 1900 60 Minutes.
- 2000 The Jewel in the Crown / Sport / T.B.A. / SATNET.

ARD

- 1130 Children's Programme.
- 1200 Press Report.
- 1245 News.
- 1315 La Paix — Concert.
- 1345 Janna.
- 1415 Chat Show.
- 1500 News.
- 1505 **Sport — show-jumping** from Hannover.
- 1630 The Wine-makers — Cote d'Or.
- 1800 News.
- 1810 **Sport — Inter Milan v AC Milan.**
- 1840 Lindenstrasse.
- 1910 Press Report.
- 2000 International News.
- 2015 Quiz Show.
- 2145 The Arts.
- 2215 News.
- 2220 100 Great Paintings — Wood.
- 2315 Liebling — Kreuzberg.

ZDF

- 1015 Mosaic.
- 1100 Christopher Columbus — Five Centuries Later.
- 1200 The Sunday Concert.
- 1245 News.
- 1330 1, 2 or 3 — quiz show
- 1515 With Edmund Hillary through the Himalayas.
- 1600 The Drombuschs.
- 1705 News.
- 1710 **Sport — Handball:** West Germany v USSR, Football and Ice Hockey.
- 1810 Mona Lisa.
- 1900 News.
- 1910 Report from Bonn.
- 1930 The Chelsea Hotel, New York.
- 2015 Fast Gerdi (2).
- 2105 Lithuania — report.
- 2200 News.
- 2220 Concert — Jessye Norman sings Carmen.
- 2315 News and Sport.
- 2325 Det sjunde inseglet — Swedish film (nc).

III

- 1200 **News of the Week —** in English.
- 1330 **Present in Berlin —** France: The Louvre.
- 1500 **Sport — The Sports Festival** in Bremen.
- 1800 Sesame Street.
- 1830 Planning and Building — report.
- 1915 Erhard — documentary.
- 2000 News.
- 2015 Hans Scheibner.
- 2100 City Station.
- 2145 Sport 3.
- 2245 Desert Fury — American film.

Monday, 20 November

SSVC

- 1230 **For Schools:** Mathematical Eye.
- 1250 **For Schools:** How We Used To Live.
- 1310 Bangers and Mash.
- 1315 Playbus.
- 1335 Neighbours.
- 1400 News* and Weather.
- 1425 Highway To Heaven.
- 1515 Home and Away.
- 1535 **Children's SSVC** starting with: Perilous Voyage.
- 1555 Bodger and Badger.
- 1610 Bravestar.
- 1635 Mike and Angelo.
- 1700 Streetwise.
- 1725 Countdown.
- 1750 The Chart Show.
- 1840 News* and BFG Weather Report.
- 1855 The Krypton Factor.
- 1920 Coronation Street.
- 1945 Home James.
- 2010 The Bill.
- 2035 The Vet.
- 2105 Boon.
- 2200 News* and BFG Weather Report.
- 2230 World in Action.
- 2255 SportsScene.
- 2355 Closedown.

AFN

- 0530 Sports Tonight.
- 0600 **Headline News.**
- 0630 Face The Nation.
- 0700 Meet The Press.
- 0730 Cartoons / Sesame Street.
- 0840 Morning Stretch.
- 0905 Motorweek.
- 0935 ABC Business World.
- 1005 People's Court.
- 1035 The Health Show.
- 1105 Ebony Jet Showcase.
- 1135 Jeopardy.
- 1200 **Headline News.**
- 1230 Oprah Winfrey.
- 1320 General Hospital.
- 1405 Guiding Light.
- 1450 Cartoons/Defenders of the Earth/Old Curiosity Shop.
- 1600 The Today Show.
- 1800 **Headline News.**
- 1830 AFN Evening News.
- 1900 The George Michael Sports Machine.
- 1930 Head of the Class.
- 1955 Gasthaus.
- 2005 Roseanne.
- 2030 T.B.A.
- 2120 Dynasty.
- 2221 AFN Late Edition.
- 2240 Simon and Simon.
- 2330 Night Moves (F).
- 0130 NBC Nightly News / SATNET.

ARD

- 1715 News.
- 1725 Cop & Co.
- 1750 **Berlin Report.**
- 1814 Auf Achse.
- 1922 **Berlin Evening News.**
- 2000 International News.
- 2015 The Great Secret (2).
- 2105 From the Diary of Scandinavian Correspondent.
- 2300 She's gotta have it — American film (nc).

ZDF

- 1700 News.
- 1715 TV Journal.
- 1745 The Fall Guy.
- 1900 News.
- 1930 Economics Report.
- 2015 Recht, nicht Rache — The Story of Simon Wiesenthal (1).
- 2145 News.
- 2250 Jazz Club — Harper Brothers and Charly Antolini.

III

- 1545 **Present in Berlin** (rpt.).
- 1800 Sesame Street.
- 1830 Health Report.
- 1915 Traffic Systems
- 2000 News.
- 2015 Financial Report.
- 2100 45 Fever — from Berlin.
- 2145 Lady Blue — American film.

Tuesday, 21 November

SSVC

- 1230 **For Schools:** Talk, Write... and Read.
- 1245 **For Schools:** Middle English.
- 1300 Allsorts.
- 1315 Playbus.
- 1335 Neighbours.
- 1400 News* and Weather.
- 1425 Hudson and Halls — new series.
- 1450 P.S.I.
- 1515 Home and Away.
- 1535 **Children's SSVC** starting with: Corners.
- 1555 Who's Next?
- 1610 The Sooty Show.
- 1630 Bluebirds.
- 1655 Blue Peter.
- 1725 Countdown.
- 1750 **All.**
- 1815 Emmerdale Farm.
- 1840 News* and BFG Weather Report.
- 1855 Tomorrow's World.
- 1925 Brookside.
- 2015 Healthy Eating with SSAFA.
- 2020 The Best of Magic.
- 2105 Fields of Fire III.
- 2200 News* and BFG Weather Report.
- 2230 Fields of Fire III (conclusion).
- 2320 Scoff — new series.
- 2345 Closedown.

AFN

- 0600 CBS Evening News.
- 0630 Sports Tonight.
- 0700 ABC Nightline.
- 0730 Cartoons / Porky Pig / Denver, The Last Dinosaur.
- 0830 Angel in Green (F).
- 1010 I Love Lucy.
- 1035 Wheel of Fortune.
- 1100 Entertainment Tonight.
- 1130 Jeopardy.
- 1200 ABC World News.
- 1230 Donahue.
- 1320 General Hospital.
- 1405 Guiding Light.
- 1450 Cartoons.
- 1500 Donovan's Kid.
- 1600 The Today Show.
- 1800 **Headline News.**
- 1830 AFN Evening News.
- 1900 Perfect Strangers.
- 1925 Wonder Years.
- 1950 Gasthaus.
- 2000 Golden Girls.
- 2030 In the Heat of the Night.
- 2130 LA Law.
- 2230 AFN Late Edition.
- 2250 O'Hara.
- 0130 NBC Nightly News / SATNET.

ARD

- 1715 News.
- 1725 I'm Back!
- 1750 **Berlin Report.**
- 1814 Bulman.
- 1922 **Berlin Evening News.**
- 2000 International News.
- 2015 The Shanghai Circus.
- 2100 Current Affairs Report.
- 2145 Magnum.
- 2300 The Woman of Life — French film.

ZDF

- 1700 News.
- 1715 TV Journal.
- 1745 A Home for Animals.
- 1900 News.
- 1930 Industry in Japan — report.
- 2015 Recht, nicht Rache — The Story of Simon Wiesenthal (2).
- 2145 News.
- 2210 La Mina — play.
- 2310 News.
- 2315 Parthesilea — Heinrich von Kleist — film.

III

- 1800 Sesame Street.
- 1830 Flitfac.
- 1915 The Dollart — report.
- 2000 News.
- 2015 Chal Show.
- 2100 The Scene of the Crime.
- 2240 Literary Report.

TV — YOUR ENTERTAINMENT GUIDE — TV

Wednesday, 22 November

SSVC

1230 **For Schools:** Words and Pictures.
 1245 **For Schools:** You and Me.
 1300 Rod, Jane and Freddy.
 1315 Playbus.
 1335 Neighbours.
 1400 News* and Weather.
 1425 Hurray for Today.
 1450 P.S.I.
 1515 Home and Away.
 1535 **Children's SSVC** starting with: The Raggy Dolls.
 1550 Clockwise.
 1610 Scooby Doo.
 1630 What's That Noise? — new series.
 1700 Nightmare.
 1725 Countdown.
 1750 The Buckman Treatment.
 1815 Doctor Who: The Curse of Fenric — new series.
 1840 News* and BFG Weather Report.
 1855 **Entertainment BFG.**
 1905 This is Your Life.
 1930 Coronation Street.
 1955 Howard's Way.
 2045 French Fields.
 2110 The Equalizer.
 2200 News* and BFG Weather Report.
 2230 Climate and Man.
 2320 Sportsnight*.
 0045 Closedown.

AFN

0600 CBS Evening News.
 0630 Sports Tonight.
 0700 ABC Nightline.
 0730 Cartoons / Sesame Street.
 0840 Morning Stretch.
 0905 Public People, Private Lives.
 1000 Fight Back! with David Horowitz.
 1030 Wheel of Fortune.
 1100 Entertainment Tonight.
 1130 Jeopardy.
 1200 ABC World News.
 1230 Oprah Winfrey.
 1320 General Hospital.
 1405 Guiding Light.
 1450 Cartoons / Ducktales / Electric Company.
 1600 The Today Show.
 1800 Headline News.
 1830 AFN Evening News.
 1900 Amen.
 1925 227.
 1950 Gasthaus.
 2000 Kennedy (1).
 2235 Night Court.
 2302 AFN Late Edition.
 2320 The Tonight Show.
 0020 Late Night with David Letterman.
 0130 NBC Nightly News / SATNET.

ARD

1655 La famiglia — Italian film.
 1900 Wildlife Report — The Seasons of the Birds.
 2000 International News.
 2015 Sport.
 2300 Comedy Show.
 2305 Chat Show.

ZDF

1805 Die Schwarzwaldklinik.
 1850 Draw for the Lotto Numbers.
 1900 News.
 1915 Theology of the Garden.
 1930 Discussion.
 2015 Melodies for the Millions — music show.
 2155 Current Affairs Report.
 2240 News.
 2245 The Sun Cannon — Views of an Artist.
 2315 The Blue Angel — German film (nc).

III

1800 Sesame Street.
 1830 Forty Years Ago (nc).
 1900 Phone-In.
 2000 News.
 2015 The Arts.
 2100 Feroz — Spanish film.
 2335 'At Night' and 'The Fiesta' — films (nc).

Thursday, 23 November

SSVC

1235 **For Schools:** Maths is Fun.
 1245 **For Schools:** Designing and Making.
 1300 Rainbow — new series.
 1315 Playbus.
 1335 Neighbours.
 1400 News* and Weather.
 1425 Take The High Road.
 1450 P.S.I.
 1515 Home and Away.
 1535 **Children's SSVC** starting with: Let's Pretend.
 1555 Creepy Crawlies.
 1610 Yogi's Treasure Hunt.
 1630 Heartbeat.
 1700 Count Duckula.
 1725 Countdown.
 1750 Classmates.
 1815 Emmerdale Farm.
 1840 News* and BFG Weather Report.
 1855 **Scene Here.**
 1915 Wheel of Fortune.
 1940 First of the Summer Wine.
 2010 The Bill.
 2035 Top Gear.
 2105 Hard Cases.
 2200 BBC News* and BFG Weather Report.
 2230 The Paradise Club.
 2320 Film '89.
 2350 Closedown.

AFN

0600 CBS Evening News.
 0630 Sports Tonight.
 0700 ABC Nightline.
 0730 Cartoons / Bugs Bunny Thanksgiving Diet/Daffy Duck's Thanks-for-Giving.
 0830 Road to Rio (F).
 1030 General Hospital.
 1115 Guiding Light.
 1200 ABC World News.
 1230 Jeopardy.
 1300 The Today Show.
 1500 T.B.A.
 1800 Headline News.
 1830 T.B.A.
 1900 Star Trek: The Next Generation.
 2000 Murphy Brown.
 2030 Murder She Wrote (1).
 2130 Thirtysomething.
 2240 The Tonight Show.
 2340 Thanksgiving Sports.
 0130 NBC Nightly News / SATNET.

ARD

1530 **Sport** — Tennis: Masters Tournament.
 1715 News.
 1725 Café Wernicke.
 1750 **Berlin Report.**
 1814 Hart to Hart.
 1922 **Berlin Evening News.**
 2000 International News.
 2015 The Way to a Better Future — report.
 2103 Music Show.
 2300 The Scene of the Crime.

ZDF

1700 News.
 1715 TV Journal.
 1745 Zwei Münchner in Hamburg.
 1900 News.
 1930 Gala Show.
 2145 News.
 2255 Kerbels Flucht — film.

III

1800 Children's Programme.
 1830 Dreizeit.
 1915 Science and Technology — Report.
 1930 Die Ostsee.
 2000 News.
 2015 Sport 3.
 2100 Lonesome Stranger — American cartoon.
 2110 Rainmaker — American film.
 2335 To Write and Live in Berlin — documentary film.

Friday, 24 November

SSVC

1230 **For Schools:** Thinkabout.
 1245 **For Schools:** Wondermaths.
 1300 Animal Fair.
 1310 Bangers and Mash.
 1315 Playbus.
 1335 Neighbours.
 1400 News* and Weather.
 1425 Take The High Road.
 1450 P.S.I.
 1515 Home and Away.
 1535 **Children's SSVC** starting with: Two by Two.
 1555 The Wombles.
 1605 But can you do it on TV?
 1625 The Ghost of Fattner Hall.
 1655 Blue Peter.
 1725 Countdown.
 1750 Happy Days.
 1810 Top of the Pops.
 1840 News* and BFG Weather Report.
 1855 Bob's Full House.
 1930 Coronation Street.
 1955 Beadle's About.
 2020 Challenge Anneka.
 2105 Barbara Taylor Bradford's Act of Will.
 2200 News* and BFG Weather Report.
 2230 Blackadder Goes Forth.
 2300 The Money Pit — film.
 0030 Closedown.

AFN

0600 CBS Evening News.
 0630 Sports Tonight.
 0700 ABC Nightline.
 0730 Cartoons / Shining Time Station / Kids Incorporated.
 0835 Morning Stretch.
 0905 Barney Miller.
 0930 New Country.
 1000 Frugal Gourmet.
 1030 Wheel of Fortune.
 1100 Entertainment Tonight.
 1130 Jeopardy.
 1200 ABC World News.
 1230 The Oprah Winfrey Show.
 1320 General Hospital.
 1405 Guiding Light.
 1450 Cartoons / Teenage Mutant Ninja Turtles.
 1530 AFN Video Jukebox Friday.
 1600 The Today Show.
 1800 Headline News.
 1830 AFN Evening News.
 1900 Charles in Charge.
 1930 This is America Charlie Brown: The Birth of the Constitution.
 1950 Gasthaus.
 2000 Mr. Belvedere.
 2030 The Equalizer.
 2130 Arthur Hailey's Hotel.
 2221 AFN Late Edition.
 2240 Stranded (F).
 0025 Late Night with David Letterman.
 0130 NBC Nightly News.
 0200 It's Garry Shandling's Show / Sport.

ARD

1535 **Sport** — Tennis: Masters Tournament.
 1715 News.
 1725 Drei Damen vom Grill.
 1750 **Berlin Report.**
 1814 Falcon Crest.
 1922 **Berlin Evening News.**
 2000 International News.
 2015 **Sport** — Tennis: Masters Tournament.
 2200 Current Affairs Report.
 2300 Comedy Show.
 2325 Sports Report.
 2350 Giulia e Giulia — Italian film.

ZDF

1700 News.
 1755 TV Journal.
 1750 All.
 1825 Hooperman.
 1900 News.
 1930 Press Report.
 2015 The Old One.
 2145 News.
 2210 The Arts.
 2250 **Sport** — Football: Dortmund v Leverkusen, Show-jumping from Berlin and Ice Hockey.
 La sirène du Mississippi — French film.
 2315

III

1800 Hallo Spencer.
 1830 The German Stock Market — report.
 1915 Stephen King — King of Horror.
 2000 News.
 2015 Profile.
 2100 Châteauevallon.
 2200 Berlin 19.



A Division of the Services Sound and Vision Corporation.

T.B.A. — To Be Announced.

* — Programme transmitted 'live' from London.

Cards for inclusion in 'Birthday Time' (Children's SSVC) should be sent to SSVC TV, BFPO 40 at least three weeks in advance. Please include the child's name, age and birth date!

SSVC TV Programmes are not for re-publication.



(F) Film.

T.B.A. To Be Announced.



1st TV

All Programmes are in colour except those marked (nc).

(OwS) — Original soundtrack with German subtitles.



2nd TV

(nc) — Not in colour.

(OwS) — Original soundtrack with German subtitles.



3rd TV

All Programmes are in colour except those marked (nc).

(OwS) — Original soundtrack with German subtitles.



SSVC (Jerboa) Video Film Hire

We hold a stock of 900 titles — which we add to regularly.

Hire charge from DM 3.00 per day.

Open: Monday — Friday 0900—1700 hrs and Saturday 1030—1300 hrs.

RADIO — YOUR ENTERTAINMENT GUIDE — RADIO

Friday, 17 November

BFBS

0600 News.
0603 Kenny MacAlister — The Breakfast Show.
0700 **The Berlin Breakfast Show.**
0900 Alan Phillips Gold.
1000 Glen Mansell.
1203 **Berlin Middy.**
1400 News.
1403 BFBS UK (rpt.).
1600 Kal Sutherland.
1800 News and Sport.
1900 Main News of the Day.
1930 The Archers.
1945 Sportsdesk.
2000 News.
2003 Tim Westwood.
2200 News.
2203 Nightspot.
2300 News, Weather and Sport.
2400 News.
0003 Late from London.
0200 News.
0203 Me Mark Page.
0400 News.
0403 Bullets (rpt.).

BBC

0645 The World Today.
0700 Newsdesk.
0800 World News, 24 Hours.
0830 The Lives of Joseph Stalin.
0900 World News, Words of Faith.
0915 Music Review.
1000 World News, British Press Review.
1015 The World Today.
1030 Financial News, Sport.
1045 Seven Seas.
1100 News Summary, Focus on Faith.
1130 Verdi and his World.
1200 World News, News about Britain.
1215 The Learning World.
1230 Meridian.
1300 Newsreel.
1315 The Lives of Joseph Stalin.
1345 Sports Roundup.
1400 World News, 24 Hours.
1430 John Peel.
1500 Outlook.
1530 Off the Shelf.
1545 Nature Now.
1600 Newsreel.
1615 Music Review.
1700 World News, News about Britain.
1800 World News, Commentary.
2100 World News, The World Today.
2125 Words of Faith.
2130 Science in Action.
2200 News Summary, Sport.
2215 Boys in the Back Room.
2230 People and Politics.
2300 Newshour.
2400 World News, Commentary.
0015 Worldbrief.
0030 Multitrack 3
0100 Newsdesk.
0130 From the Weeklies.
0145 Recording of the Week.
0200 Outlook.
0230 Behind the Wall.
0245 Book Choice.
0250 New Ideas.
0300 World News, British Press Review.
0315 Network UK.
0330 People and Politics.
0400 World News, News about Britain.
0415 The World Today.
0430 The Vintage Chart Show.
0500 Newsdesk.

Saturday, 18 November

BFBS

0600 News.
0603 Kenny MacAlister — The Breakfast Show.
0800 News, Sport, Weather and Press Review.
0845 Screen Scene.
0900 News.
0915 Bigwood.
0930 Sportswatch.
1000 News.
1003 Me Mark Page (rpt.).
1200 News.
1203 **Berlin Middy.**
1400 News.
1403 Counterpoint.
1430 Saturday Sports Show.
1700 Sports Report.
1800 News.
1803 Paul Elphick.
1900 News.
1903 Countdown Country.
2000 News.
2003 Nicky Home's Rock Show.
2200 News.
2203 Nothing but the Blues.
2300 News, Weather and Sport.
2304 The Other Side.
2400 News.
0003 John Peel's Music.
0200 News.
0203 Break for the Border.
0300 News.
0303 In Concert — Southside Johnny & The Asbury Dukes.
0400 News.
0403 Rockola (rpt.).

BBC

0645 The World Today.
0700 Newsdesk.
0800 World News, 24 Hours.
0830 From the Weeklies.
0845 Network UK.
0900 World News, Words of Faith.
0915 A Jolly Good Show.
1000 World News, British Press Review.
1015 The World Today.
1030 Financial News, Sport.
1045 Worldbrief.
1100 News, Here's Humphil
1115 Letter from America.
1130 People and Politics.
1200 World News, News about Britain.
1215 Behind the Wall.
1230 Meridian.
1300 Newsreel.
1315 Multitrack 3.
1345 Sports Roundup.
1400 World News, 24 Hours.
1430 Network UK.
1445 Short Story.
1500 News, The Ken Bruce Show.
1530 Sportsworld.
1700 World News, News about Britain.
1800 News, Sportsworld.
2100 World News, From Our Own Correspondent.
2125 Words of Faith.
2130 Meridian.
2200 News Summary, Sports Roundup.
2215 Behind the Wall.
2230 The Lives of Joseph Stalin.
2300 Newshour.
2400 World News, Book Choice.
0015 A Jolly Good Show.
0100 Newsdesk.
0130 Composer of the Month.
0200 News, Globe Theatre: Summer of the Aliens.
0300 World News, British Press Review.
0315 The Book People.
0330 The Ken Bruce Show.
0400 World News, News about Britain.
0415 From Our Own Correspondent.
0430 Back To Square One.
0500 Newsdesk.

Sunday, 19 November

BFBS

0600 News.
0603 Kenny MacAlister — The Breakfast Show.
0745 Lotto and Spiel 77 Results.
0800 News, Weather and Sport.
0840 John Roberts.
0900 News, Weather.
0930 Newsweek.
1000 News.
1003 **In Berlin.**
1100 News.
1200 Cologne Middy.
1400 The World This Weekend.
1455 Clifton's Corner.
1500 Paul Gambaccini (rpt.).
1700 News.
1703 The Top Forty Show (rpt.).
1900 News.
1903 Men at the Top.
1930 Sitrep.
2000 News.
2003 Bob Harris.
2200 News.
2203 Nightspot.
2400 News.
0003 Late from London.
0200 News.
0203 BFBS UK.
0400 News.
0403 Bob Harris (rpt.).

BBC

0645 Letter from America.
0700 Newsdesk.
0800 World News, 24 Hours.
0830 From Our Own Correspondent.
0845 Book Choice.
0900 World News, Words of Faith.
0915 The Pleasure's Yours.
1000 World News, British Press Review.
1015 Nature Now.
1030 Financial Review.
1040 Book Choice.
1045 Short Story.
1100 News, Science in Action.
1130 In Praise of God.
1200 World News.
1215 From Our Own Correspondent.
1230 Composer of the Month.
1300 News, Globe Theatre: Summer of the Aliens.
1400 World News, 24 Hours.
1430 Sports Roundup.
1445 Personal View.
1500 News Summary, What do Muslims believe?
1530 Anything Goes.
1600 Newsreel.
1615 From Britain's Music Festivals.
1700 World News, News about Britain.
1800 World News, Book Choice.
2100 World News, Personal View.
2130 Quiz.
2200 News Summary, Sport.
2215 The Pleasure's Yours.
2300 Newshour.
2400 World News, Book Choice.
0015 Letter from America.
0030 What do Muslims believe?
0100 Newsdesk.
0130 In Praise of God.
0200 News Summary, The Good Book.
0230 Readings from The Good Book.
0245 Cole Porter Among Friends.
0300 World News, British Press Review.
0315 Andy Kershaw's World of Music.
0330 Science in Action.
0400 World News, News about Britain.
0415 Good Books.
0430 Anything Goes.
0500 Newsdesk.

Monday, 20 November

BFBS

0600 News.
0603 Jonathan Miles — The Breakfast Show.
0700 **The Berlin Breakfast Show.**
0900 Alan Phillips Gold.
1000 Glen Mansell.
1203 **Berlin Middy.**
1400 News.
1403 BFBS UK (rpt.).
1600 Alton Andrews.
1800 News and Sport.
1900 Main News of the Day.
1930 The Archers.
1945 Sportsdesk.
2000 News.
2003 Rodigan's Rockers.
2200 News.
2203 Nightspot.
2300 News, Weather and Sport.
2400 News.
0003 Late from London.
0200 News.
0203 BFBS UK.
0400 News.
0403 Soul Train.

BBC

0645 Recording of the Week.
0700 Newsdesk.
0800 World News, 24 Hours.
0830 In the Psychiatrist's Chair.
0900 World News, Words of Faith.
0915 Poems by Post.
0930 Anything Goes.
1000 World News, British Press Review.
1015 Good Books.
1030 Financial News, Sport.
1045 Andy Kershaw's World of Music.
1100 News Summary, What do Muslims believe?
1130 The Vintage Chart Show.
1200 World News, News about Britain.
1215 Tech Talk.
1230 The Ken Bruce Show.
1300 Newsreel.
1315 Quiz.
1345 Sports Roundup.
1400 World News, 24 Hours.
1430 In the Psychiatrist's Chair.
1500 Outlook.
1530 Off the Shelf.
1545 The Book People.
1600 Newsreel.
1615 The Good Book.
1645 Readings from The Good Book.
1700 World News, News about Britain.
2100 World News, The World Today.
2125 Words of Faith.
2130 The Vintage Chart Show.
2200 News Summary, Sport.
2215 Europe's World.
2230 Sports International.
2300 Newshour.
2400 World News, Commentary.
0015 Poems by Post.
0030 Multitrack 1: Top Twenty.
0100 Newsdesk.
0130 Megamix.
0200 Outlook.
0230 Short Story.
0245 Europe's World.
0300 World News, British Press Review.
0315 Network UK.
0330 Sports International.
0400 World News, News about Britain.
0415 The World Today.
0430 John Peel.
0500 Newsdesk.

Tuesday, 21 November

BFBS

0600 News.
0603 Jonathan Miles — The Breakfast Show.
0700 **The Berlin Breakfast Show.**
0900 Alan Phillips Gold.
1000 Glen Mansell.
1203 **Berlin Middy.**
1400 News.
1403 BFBS UK (rpt.).
1600 Alton Andrews.
1800 News and Sport.
1815 Men at the Top.
1900 Main News of the Day.
1930 The Archers.
1945 Sportsdesk.
2000 News.
2003 Rockola.
2200 News.
2203 Nightspot.
2300 News, Weather and Sport.
2400 News.
0003 Late from London.
0200 News.
0203 BFBS UK.
0400 News.
0403 Nicky Home's Rock Show (rpt.).

BBC

0645 The World Today.
0700 Newsdesk.
0800 World News, 24 Hours.
0830 Europe's World.
0845 Network UK.
0900 World News, Words of Faith.
0915 Tech Talk.
0930 The Atlantic Story.
1000 World News, British Press Review.
1015 The World Today.
1030 Financial News, Sport.
1045 Cole Porter Among Friends.
1100 News Summary, Discovery.
1130 Sports International.
1200 World News, News about Britain.
1225 Book Choice.
1230 Megamix.
1300 Newsreel.
1315 Multitrack 1: Top Twenty.
1345 Sports Roundup.
1400 World News, 24 Hours.
1430 Network UK.
1445 Boys in the Back Room.
1500 Outlook.
1530 Off the Shelf.
1545 Cole Porter Among Friends.
1600 Newsreel.
1615 A Jolly Good Show.
1700 World News, News about Britain.
1800 World News, Commentary.
2100 World News, The World Today.
2130 Meridian.
2200 News Summary, Sport.
2215 Business Matters.
2230 Megamix.
2300 Newshour.
2400 World News, Commentary.
0015 From Britain's Music Festivals.
0100 Newsdesk.
0130 Omnibus.
0200 Outlook.
0225 Financial News.
0230 From Defiance to Independence.
0245 Country Style.
0300 World News, British Press Review.
0315 Tech Talk.
0330 The Atlantic Story.
0400 World News, News about Britain.
0415 The World Today.
0430 Discovery.
0500 Newsdesk.


RADIO — YOUR ENTERTAINMENT GUIDE — RADIO

Wednesday, 22 November
BFBS 

0600 News.
0603 Jonathan Miles — The Breakfast Show.
0700 **The Berlin Breakfast Show.**
0900 Alan Phillips Gold.
1000 Glen Mansell.
1203 **Berlin Midday.**
1400 News.
1403 BFBS UK (rpt.).
1600 Alton Andrews.
1800 News and Sport.
1900 Main News of the Day.
1930 The Archers.
1945 Sportsdesk.
2000 News.
2003 Soul Train (rpt.).
2200 News.
2203 Nightspot.
2300 News, Weather and Sport.
2400 News.
0003 Late from London.
0200 News.
0203 BFBS UK.
0400 News.
0403 John Peel's Music (rpt.).

BBC 


0645 The World Today.
0700 Newsdesk.
0800 World News, 24 Hours.
0830 Development '89.
0900 World News, Words of Faith.
0915 Business Matters.
0930 Back To Square One.
1000 World News, British Press Review.
1015 The World Today.
1030 Financial News, Sport.
1045 From Defiance to Independence.
1100 Omnibus.
1130 Jazz for the Asking.
1200 World News, News about Britain.
1215 Country Style.
1230 Meridian.
1300 Newsreel.
1315 Food Plants.
1325 The Farming World.
1345 Sports Roundup.
1400 World News, 24 Hours.
1430 Development '89.
1500 Outlook.
1530 Off the Shelf.
1545 Business Matters.
1600 Newsreel.
1615 Poems by Post.
1630 Comedy Show.
1700 World News, News about Britain.
1800 World News, Commentary.
2100 World News, The World Today.
2130 Assignment.
2200 News Summary, Sports Roundup.
2215 Rock Salad.
2245 Recording of the Week.
2300 Newshour.
2400 World News, Sportsworld Extra.
0015 Good Books.
0030 Multitrack 2.
0100 Newsdesk.
0130 Comedy Show.
0200 Outlook.
0230 Waveguide.
0240 Book Choice.
0245 Society Today.
0300 World News, British Press Review.
0315 Network UK.
0330 Assignment.
0400 World News, News about Britain.
0415 The World Today.
0430 The Litmus Test.
0500 Newsdesk.

Thursday, 23 November
BFBS 

0600 News.
0603 Jonathan Miles — The Breakfast Show.
0700 **The Berlin Breakfast Show.**
0900 Alan Phillips Gold.
1000 Glen Mansell.
1203 **Berlin Midday.**
1400 News.
1403 BFBS UK (rpt.).
1600 Kai Sutherland.
1800 News and Sport.
1900 Main News of the Day.
1930 The Archers.
1945 Sportsdesk.
2000 News.
2003 Bullets.
2200 News.
2203 Nightspot.
2300 News, Weather and Sport.
2400 News.
0003 Late from London.
0200 News.
0203 BFBS UK.
0400 News.
0403 The Top Forty Show.

BBC 

0645 The World Today.
0700 Newsdesk.
0800 World News, 24 Hours.
0830 Mediawatch.
0845 Network UK.
0900 World News, Words of Faith.
0915 The Book People.
0930 John Peel.
1000 World News, British Press Review.
1015 The World Today.
1030 Financial News, Sport.
1045 Society Today.
1100 News Summary, Assignment.
1130 Comedy Show.
1200 World News, News about Britain.
1215 New Ideas.
1230 Scenes from a Marriage.
1300 Newsreel.
1315 Multitrack 2.
1345 Sports Roundup.
1400 World News, 24 Hours.
1430 Network UK.
1445 Folk in Britain.
1500 Outlook.
1530 Off the Shelf.
1545 Mediawatch.
1600 Newsreel.
1615 The Pleasure's Yours.
1700 World News, News about Britain.
1800 World News, Commentary.
2100 World News, The World Today.
2130 Meridian.
2200 News Summary, Sport.
2215 Seven Seas.
2230 The Learning World.
2245 Mediawatch.
2300 Newshour.
2400 World News, Commentary.
0015 Music Review.
0100 Newsdesk.
0130 Best on Record.
0200 Outlook.
0230 Folk in Britain.
0245 The Learning World.
0300 World News, British Press Review.
0315 Seven Seas.
0330 Scenes from a Marriage.
0400 World News, News about Britain.
0415 The World Today.
0430 Focus on Faith.
0500 Newsdesk.

Friday, 24 November
BFBS 

0600 News.
0603 Kenny MacAlister — The Breakfast Show.
0700 **The Berlin Breakfast Show.**
0900 Alan Phillips Gold.
1000 Glen Mansell.
1203 **Berlin Midday.**
1400 News.
1403 BFBS UK (rpt.).
1600 Kai Sutherland.
1800 News and Sport.
1900 Main News of the Day.
1930 The Archers.
1945 Sportsdesk.
2000 News.
2003 Tim Westwood.
2200 News.
2203 Nightspot.
2300 News, Weather and Sport.
2400 News.
0003 Late from London.
0200 News.
0203 Me Mark Page.
0400 News.
0403 Bullets (rpt.).

BBC 

0645 The World Today.
0700 Newsdesk.
0800 World News, 24 Hours.
0830 The Lives of Joseph Stalin.
0900 World News, Words of Faith.
0915 Music Review.
1000 World News, British Press Review.
1015 The World Today.
1030 Financial News, Sport.
1045 Seven Seas.
1100 News Summary, Focus on Faith.
1130 Best on Record.
1200 World News, News about Britain.
1215 The Learning World.
1230 Meridian.
1300 Newsreel.
1315 The Lives of Joseph Stalin.
1345 Sports Roundup.
1400 World News, 24 Hours.
1430 John Peel.
1500 Outlook.
1530 Off the Shelf.
1545 Nature Now.
1600 Newsreel.
1615 Music Review.
1700 World News, News about Britain.
1800 World News, Commentary.
2100 World News, The World Today.
2125 Words of Faith.
2130 Science in Action.
2200 News Summary, Sport.
2215 A Taste of Soul.
2230 People and Politics.
2300 Newshour.
2400 World News, Commentary.
0015 Worldbrief.
0030 Multitrack 3.
0100 Newsdesk.
0130 From the Weeklies.
0145 Recording of the Week.
0200 Outlook.
0230 Behind the Wall.
0245 Book Choice.
0250 New Ideas.
0300 World News, British Press Review.
0315 Network UK.
0330 People and Politics.
0400 World News, News about Britain.
0415 The World Today.
0430 The Vintage Chart Show.
0500 Newsdesk.

BFBS Radio

Stereo VHF 98.80 MHz
BFBS Radio Berlin
Fourth Floor, Summit House
Tel. 309 52 65
Broadcasting 24 hours a day

BBC World Service

BBC World Service English and German language programmes are available to listeners in Berlin on 90.2 MHz VHF and 810 KHz (370 metres) medium wave. Full details are given in the Information Supplement.

Programmes in English can be heard at the following times daily:

90.2 MHz
VHF

0645–0745 hrs

0800–1715 hrs

1800–1815 hrs

2100–0530 hrs

Programme highlights for the week beginning Saturday, 18 November include:

Short Story: Tonga Fisherman. Lake Kariba in Zimbabwe is the setting for this week's tale which deals with the topical and never-ending war against poachers. The author, Robert Woollacott, was District Commissioner at Kariba during the construction of the dam and wrote the story while sailing on the lake. **Saturday, 18, 1445 hrs, Sunday, 19, 1045 hrs and Tuesday, 21, 0230 hrs.**

The Atlantic Story. Atlantic Records is one of the world's great and most enduring record labels. This new series of eighteen programmes traces its 40-year history beginning with the founding of the label in 1948 by Ahmet Ertegun, the son of the Turkish Ambassador to the USA. The first part of the Atlantic Story also includes the signing of Ruth Brown, the biggest selling rhythm and blues singer of the 50s, and the company's first hit, 'Drinkin' Wine Spo-dee-o-dee' by Stick McGhee. **Tuesday, 21, 0930 hrs and Wednesday, 22, 0330 hrs.**

The Learning World. Craft, Design and Technology come under the microscope this week. John Turtle visits Highams School in East London where a boy of 13 designed a Moisture Sensor. The school requires all its pupils to study the three subjects until the age of 16 and by doing so gives them a greater understanding of what makes the world tick! **Thursday, 23, 2230 hrs, Friday, 24, 0245 hrs and 1215 hrs.**

A Taste of Soul. Presenter Robbie Vincent is already well-known to radio listeners in Britain for his regular weekly programme; now he hosts his first show for the World Service. Each week listeners can tune in for a 15-minute mix of classic soul and music from the current scene. **Friday, 24, 2215 hrs.**

MUSIC — YOUR ENTERTAINMENT GUIDE — MUSIC

CLASSICAL CONCERTS

PASSIONSKIRCHE
Marheinekeplatz 1, Kreuzberg
Friday, 24 November, 2000 hrs
The Johnny Thompson Singers
Tickets DM 26

PHILHARMONIC CONCERT HALL
Matthäikirchstrasse, Tiergarten,
Tel. 254 88-0

Box Office open Mondays to Fridays from 1530 to 1800 hrs, Saturdays and Sundays from 1100 to 1400 hrs

Friday, 17 November, 2000 hrs
Symphony Orchester Berlin
Conductor: **Thomas-Christian David**
Soloist: **Thomas Schmögner**
Works by Handel, Poulenc, Bach, Saint-Saëns

Saturday, 18 November, 2000 hrs
Berliner Philharmonisches Orchester
Conductor: **André Previn**
Soloist: **Itzhak Perlman**
Works by Enescu, Goldmark, Dvorak

Friday, 24 November, 2000 hrs
Symphony Orchester Berlin
Conductor: **Thomas-Christian David**
Soloist: **Gustavo LaCruz**
Works by Tchaikovsky

Saturday, 25 November, 2000 hrs
Sunday, 26 November, 1100 hrs
Berliner Philharmonisches Orchester
Conductor: **Hans Werner Henze**
Soloist: **Kolja Blecher**
Works by Henze and Monteverdi

Saturday, 2 and Sunday, 3 December, 1600 hrs
Viennese Boys Choir
Christmas Songs and "Das ist Wien"

Saturday, 23 December, 1800 hrs
Rundfunkchor and Sinfonieorchester Leipzig
Conductor: **Max Pommer**
Handel: The Messiah

EXHIBITIONS

Berlinische Galerie
Martin-Gropius-Bau
Stresemannstr. 110, 1000 Berlin 61
Tuesday–Sunday 1000–2200 hrs
November
Puhl & Wagner – Mosaic Workshop
Until 31 December
Bernhard Hetsig – Retrospective
Until 10 January 1990
10 Years of Photography

Galerie Anselm Dreher
Pfalzburger Str. 80, 1000 Berlin 15
Tuesday–Friday 1400–1830 hrs
Saturday 1100–1400 hrs
Until 10 December
'Strategie & Rhetoric'
Dennis Adams, John Baldessari, Jochen Gerz

Hamburger Bahnhof
Invalidenstr. 50–51, 1000 Berlin 21
Tuesday–Saturday 1000–1900 hrs
Sunday 1000–2000 hrs
Until 15 January 1990
"So viel Anfang war nie..."
Gerrit Towns 1945–49

POP CONCERTS

APOSTEL-PAULUS-KIRCHE
Klixstrasse 2, Schöneberg
Wednesday, 6 December, 2000 hrs
BOLSHOI DON COSSACKS
Tickets DM 32

CHAMBER MUSIC HALL
Saturday, 18 November, 2000 hrs
HAMBURGER STADTMUSIKATZEN
From Waltz to Ragtime
Tickets DM 14–35

DEUTSCHLANDHALLE
Messedamm 26
Sunday, 3 December, 1900 hrs
EDELWEISS '89
Folk Music Concert
Tickets DM 18–44

Monday, 4 December, 2000 hrs
WESTERNHAGEN
Tickets DM 26

EISSPORTHALLE
Jafféstrasse, Charlottenburg
Monday, 20 November, 2000 hrs
ERASURE
Tickets DM 28

Monday, 27 November, 2000 hrs
RAMONES / GHOST DANCE / PLAN B
Tickets DM 28

HOCHSCHULE DER KÜNSTE
Hardenbergstrasse 33
Tel. 31 85-23 74
Saturday, 25 November, 2000 hrs
MELANIE
Tickets DM 20–40

ICC
Sunday, 7 January 1990, 2000 hrs
SPANDAU BALLET
Tickets DM 24–46

POP CONCERTS

METROPOL
Nollendorfplatz 5, Schöneberg
Tel. 216 41 22

Monday, 27 November, 2000 hrs
SHAKATAK
Tickets DM 26

Tuesday, 28 November, 2000 hrs
ZIGGY MARLEY
To be confirmed

Wednesday, 29 November, 2000 hrs
GOLDEN EARRING
Tickets DM 26

Monday, 11 December, 2000 hrs
BONFIRE / VENGEANCE
Tickets DM 29

Wednesday, 13 December, 2000 hrs
TEN YEARS AFTER
Tickets DM 30

PHILHARMONIC CONCERT HALL
Wednesday, 22 November, 1530 hrs
WIL SALDEN & HIS ORCHESTRA
Best of Swing
Tickets DM 22–32

Thursday, 30 November, 2000 hrs
THE VOLGA COSSACKS
Tickets DM 15–32

QUARTIER LATIN
Thursday, 23 November, 2100 hrs
ASIA
Featuring Carl Palmer and John Wetton
Tickets DM 23

Sunday, 26 November, 2100 hrs
TOM CUNNINGHAM & THE BELLS
Tickets DM 11

Tuesday, 28 November, 2100 hrs
BLISS
Tickets DM 22

Monday, 18 December, 2100 hrs
WOLFGANG AMBROS
Tickets DM 24

THE BRITISH COUNCIL

Concerts

Friday, 1 December, 2000 hrs
Duo Evening with Bernd Teichgräber (violin) and **Kevin McCutcheon (piano)**
Works by Beethoven, Delius, Siebert, Niemann and Brahms.
Tickets DM 10 (DM 8)
Tel. 31 10 99-0 for reservations.

Exhibition

Until Thursday, 30 November
Sculpture in Berlin – A joint exhibition of sculpture by seventeen graduate students from the London Royal Academy of Arts, and the Hochschule der Künste.
Hochschule der Künste, Hardenbergstrasse 33, 1000 Berlin 12.
Open: Monday–Saturday, 1000–1900 hours

Films

Thursday, 23 November, 2000 hrs
Lord Jim
Thursday, 30 November, 2000 hrs
Maurice

THE BRITISH COUNCIL

Lectures/Seminars

Friday, 17 November
English Language Teaching and Learning after 1992 – by lecturers Professor Brian Hill and Heinz Frey
Tel. 31 10 99-14 for more information.

Monday, 27 and Tuesday, 28 November
"Current Methodological Questions in English Teaching for Secondary Schools" by lecturer Dr. John David Willis.
Tel. 31 10 99-14 for more information.

Friday, 1 December, 2000 hrs
Peter McGregor "Why did the British get it wrong? – The View of a Patriot about his Country" – at the British Council Library.
Tickets DM 5 (DM 3)
Tel. 31 10 99-0 for more information.

All events take place at the British Centre on Hardenbergstrasse unless shown otherwise.
Tel. 31 10 99-0 for details.

STAGE — YOUR ENTERTAINMENT GUIDE — STAGE

OPERA HOUSES

DEUTSCHE OPER

Bismarckstrasse 35, Charlottenburg
Tel. 341 02 49

NOVEMBER

Friday, 17	1930 hrs	Faust**
Saturday, 18	1930 hrs	Ballet: Giselle
Sunday, 19	1900 hrs	Faust**
Monday, 20		Closed
Tuesday, 21	2000 hrs	Recital: Teresa Berganza
Wednesday, 22	1930 hrs	Faust**
Thursday, 23	2000 hrs	Der Troubadour*
Friday, 24	2000 hrs	Ballet: There is a time/Land/Rooms
Saturday, 25	1900 hrs	Don Giovanni*
Sunday, 26	1800 hrs	Aida*
Monday, 27	1930 hrs	Der Troubadour*
Tuesday, 28	1900 hrs	Don Giovanni*
Wednesday, 29		Closed
Thursday, 30	1930 hrs	Fidelio

* in Italian

** in French

You are advised to check bookings with the opera houses as programmes and times of performances are subject to change without notice.

OPERA HOUSES

KOMISCHE OPER

Behrenstrasse 55-57, East Berlin
Tel. (0372) 220 27 61

NOVEMBER

Friday, 17	2000 hrs	Concert: Daniel Barenboim, Piano
Saturday, 18	1930 hrs	La Bohème
Sunday, 19	1100 hrs	Die weiße Krankheit (Foyer)
Monday, 20	1900 hrs	Ballet: Stabat mater
Tuesday, 21		Closed
Wednesday, 22		Closed
Thursday, 23	1930 hrs	Ballet: Stabat mater
Friday, 24	2000 hrs	Concert
Saturday, 25	1900 hrs	Giustino
Sunday, 26	1900 hrs	Ballet: Stabat mater
Monday, 27		Closed
Tuesday, 28		Closed
Wednesday, 29	1900 hrs	Eugen Onegin
Thursday, 30	2000 hrs	Orpheus and Eurydice (no interval)

DECEMBER

Friday, 1	1900 hrs	The Magic Flute
Saturday, 2	1900 hrs	Ritter Blaubart
Sunday, 3	1100 hrs	Music for Advent (Foyer)
	1900 hrs	The Marriage of Figaro
Monday, 4		Closed
Tuesday, 5	1930 hrs	La Bohème
Wednesday, 6		Closed

Tickets on sale now

OPERA HOUSES

DEUTSCHE STAATSOOPER

Unter den Linden 7, East Berlin
Tel. (0372) 207 13 62

NOVEMBER

Friday, 17	2000 hrs	Concert (Schauspielhaus)
Saturday, 18	1730 hrs	Tristan and Isolde
Sunday, 19	1500 hrs	Der Rosenkavalier
		Prima... (Apollo Saal)
	1900 hrs	Der Freischütz
Monday, 20		Closed
Tuesday, 21	1930 hrs	Ballet: Don Juan/Faust
Wednesday, 22	1830 hrs	Der Rosenkavalier
Thursday, 23	1930 hrs	Ballet: Giselle
Friday, 24	1900 hrs	Alcina
Saturday, 25	1900 hrs	La Traviata
Sunday, 26	1730 hrs	Parsifal
Monday, 27		Closed
Tuesday, 28		Closed
Wednesday, 29	2000 hrs	Recital: Magdalena Hajossyova (Apollo Saal)
Thursday, 30	1600 and 1900 hrs	Hänsel and Gretel

DECEMBER

Friday, 1	1930 hrs	Il Seraglio
Saturday, 2	1900 hrs	Graf Mirabeau
Sunday, 3	1830 hrs	Ballet: The Nutcracker
Monday, 4	1930 hrs	Concert (Schauspielhaus)
Tuesday, 5		Closed
Wednesday, 6	1900 hrs	Hänsel and Gretel

* in Italian

Tickets on sale now

FILM — YOUR ENTERTAINMENT GUIDE — FILM



SSVC JERBOA CINEMA

Theodor-Heuss-Platz,
Charlottenburg
Tel. 309 41 86

Friday, 17, Saturday, 18, Sunday, 19 and Monday, 20, 1930 hrs

POLICE ACADEMY 6 — CITY UNDER SIEGE 'PG'

Comedy
Bubba Smith, Michael Winslow
The city is experiencing the worst outbreak of mayhem it has ever known...and Captain Harris suspects that a spy is lurking within the precinct walls. It's back to work once more for that unlikely squad of crime-busters.
Ends approx. 2055 hrs

Saturday, 18, 1000 hrs — Children's Matinee
No Children Under 5 Years of Age Admitted
SNOW WHITE AND THE SEVEN DWARFS 'U'
Ends approx. 1120 hrs

Tuesday, 21 and Wednesday, 22, 1930 hrs
JANUARY MAN '15'
Thriller
Kevin Kline, Susan Sarandon
Ends approx. 2105 hrs

Thursday, 23
CLOSED

Friday, 24 and Saturday, 25, 1930 hrs
DIRTY ROTTEN SCOUNDRELS 'PG'
Comedy
Michael Caine, Steve Martin
Extracting money from the French Riviera rich, two experts on a new client to settle their territory dispute.
Ends approx. 2120 hrs

Saturday, 25, 1000 hrs — Children's Matinee
No Children Under 5 Years of Age Admitted
BAMBI 'U'
Ends approx. 1110 hrs



ODEON CINEMA

Hauptstrasse 116, Schöneberg
Tel. 781 56 67
U-Bahn: Innsbrucker Platz, Bus: 4

Daily at 1745 hrs, 2030 hrs and 2315 hrs
Saturdays and Sundays also at 1500 hrs
BATMAN
For one week only!



SSVC ASTRA CINEMA

RAF Gatow
Tel. 309 26 58

Friday, 17, Saturday, 18, Sunday, 19 and Monday, 20, 1930 hrs

THREE FUGITIVES 'PG'

Comedy
Nick Nolte, Martin Short
Ends approx. 2105 hrs

Saturday, 18, 1400 hrs — Children's Matinee
No Children Under 5 Years of Age Admitted
THE RESCUERS 'U'
Ends approx. 1515 hrs

Tuesday, 21 and Thursday, 23, 1930 hrs
THE FLY II '18'
Science-Fiction Adventure
Eric Stoltz, Daphne Zuniga
Ends approx. 2115 hrs

Wednesday, 22
CLOSED

Friday, 24, Saturday, 25, Sunday, 26 and Monday, 27, 1930 hrs
POLICE ACADEMY 6 — CITY UNDER SIEGE 'PG'
Comedy
Bubba Smith, Michael Winslow
Ends approx. 2055 hrs

Saturday, 25, 1400 hrs — Children's Matinee
No Children Under 5 Years of Age Admitted
SNOW WHITE AND THE SEVEN DWARFS 'U'
Ends approx. 1520 hrs

Tuesday, 28 and Thursday, 30
JANUARY MAN '15'
Thriller
Kevin Kline, Susan Sarandon
Ends approx. 2105 hrs

Wednesday, 29
CLOSED

British Board of Film Censors Certificate Classification

- U - Suitable for all age groups.
- PG - Parental guidance is suggested.
- 15 - Viewing restricted to persons aged 15 years of age and over.
- 18 - Viewing restricted to persons aged 18 years of age and over.



OUTPOST THEATRE

Clayallee
Tel. 819 85 24

COLUMBIA THEATRE

Columbiadamm, Tempelhof
Tel. 819 55 22

Programmes not available.



CINEMA L'AIGLON

Kurt-Schumacher-Damm 123
Tel. 418 19 39
(Francs/Deutsche Marks)

Friday, 17, 2030 hrs
CHIEN DE FLIC
James Belushi, Mel Harris

Sunday, 19, 2030 hrs
ETAT DE CHOC
James Woods, Sean Young

Monday, 20, 2030 hrs
SKINHEADS
Barbara Bain, Chuck Connors

Wednesday, 22, 2030 hrs
KICKBOXER
Jean Claude van Damme, Dennis Alexio

Friday, 24, 2030 hrs
L'ARME FATALE 2
Mel Gibson, Danny Glover



CINEMA LE FLAMBEAU

Cité Foch, Hermsdorfer Strasse
Tel. 418 84 84
(Francs/Deutsche Marks)

Saturday, 18, 1400 hrs
LE PETIT DINOSAURE ET LA VALLÉE DES MERVEILLES
Animated film

Saturday, 18, 2030 hrs
COCKTAIL
Tom Cruise, Bryan Brown

Tuesday, 21, 2030 hrs
L'ARME FATALE 2
Mel Gibson, Danny Glover

CLASSIFIED ADVERTISEMENTS

GENERAL

- **Sewing Machines can be hired for DM 10 per week** through Barrack Exchange stores at Dickensweg and RAF Gatow, Estate Warden's Office at Darbystrasse and the Families' Office at Brooke, Montgomery and Wavel Barracks. **Electric Shampoo/Polishers** are also available at each location, at a hire of DM 5 per day (eventual profits will go to SSAFA).
- **Hot, Hot, Hot.** The Silver Star Disco. Check out Frankie on 331 63 58.
- **Sound Barrier Disco.** Berlin's most popular mobile disco is now taking bookings for Christmas. If you want the best light show in Berlin and the greatest sounds around book soon to avoid disappointment. Tel. Frank on 365 75 41 or Ron on 365 33 42. You'll be glad you did.
- **Gaby's Hair Flair** is situated on the fifth floor of BMH Berlin, for cut and blow dry, perms, highlights, colouring etc. Open Tuesday to Thursday, 0900-1600 hours and Friday, 0900-1900 hours. Tel. 309 67 60.
- **Bread and Circuses?** Books, new and second-hand; cards, birthday and Christmas etc. Page 69, Goethestrasse 69, 1000 Berlin 12. Tel. Robin on 31 62 33, Tuesday-Friday 1400-1800 hours and Saturday 1000-1400 hours. Books wanted too.
- **Berlin/UK registered childminder** has vacancies, rates negotiable. Contact Angie on 309 67 34 (Tharauer Allee, Charlottenburg).

FOR SALE

- **CARFORCE International**, a superb choice in tax-free cars, part exchange, finance, insurance and more. DIAL ONLY 01 30 78 74 and you will get through to the UK for the cost of a local call.
- **Finance available for new or used cars.** Clearance within one hour. To take advantage of this fast, efficient and discreet service, please ring Export Sales on (05051) 22 92.
- **Immediately available**, large constantly changing selection of used cars, both r.h.d. and l.h.d., tax free and tax paid, mostly belonging to members of the Forces, no deposit finance and part exchange available. Tel. Export Sales on (05051) 22 92.
- **VOLVO - Lead-free is only the start of things**, at Volvo we offer all catalytic converters for all models on request. For a cleaner environment choose Volvo. Call Andrew at Volvo Lochner on 795 20 66 (office) or 752 82 16 (evenings).

FOR SALE

- **1986 Nissan Prairie 1800 SGL**, 43,000 miles, burgundy, sun roof, non-smoker's car, in very good condition, garage serviced since new, DM 9,500. Tel. 309 67 79 (after 1800 hours, please).
- **1988 (July) Daihatsu GTTI**, white, 5,000 miles, in excellent condition, DM 10,000. Tel. CT Maiden on 365 13 37.
- **1987 Rover 216 S**, r.h.d., red, stereo, low bar, 22,000 miles, very good condition, no deposit finance and part exchange available. Tel. Export Sales on (05051) 22 92.
- **1988 Toyota Corolla 1300 GL Estate**, red, immaculate condition, no deposit finance and part exchange available. Tel. Export Sales on (05051) 22 92.
- **VW Golf GTI**, r.h.d., UK tax paid, grey, alloys, stereo, sun roof, very good condition, no deposit finance and part exchange available. Tel. Export Sales on (05051) 22 92.
- **1988 Toyota Corolla EL**, four door, r.h.d., stereo, dark blue, DM 14,099, no deposit finance and part exchange available. Tel. Export Sales on (05051) 22 92.
- **1988 Nissan Laurel SGLI**, r.h.d., gold, stereo, sun roof, immaculate condition, no deposit finance and part exchange available. Tel. Export Sales on (05051) 22 92.
- **1988 (December) Nissan Micra SGL**, dark blue, stereo, 5,500 miles, no deposit finance and part exchange available. Tel. Export Sales on (05051) 22 92.
- **1979 Toyota Starlet**, very reliable, ideal Berlin runaround, l.h.d., BFG to March 1990, radio/cassette, DM 900 o.n.o. Tel. 309 35 75 (work) or 309 34 25 (home).

FOR SALE

- **Ford Capri**, V registration, UK tax paid, r.h.d., very good condition, good runner, gold with black vinyl roof, fitted stereo radio/cassette with four 100 watt speakers, needs new headlights for BFG, car has ten months MOT, good reason for sale. Tel. Tpr Dudley on 309 34 26 (work) or call at 24/7 Darbystrasse, Spandau.
- **1984 (June) Honda Prelude**, Stratos blue, non-smoker's car, electric windows, sun roof, aerial, excellent condition, DM 11,000. Tel. 309 42 16.
- **1985 (October) VW Golf C**, red, BFG to October 1990, very good condition, non-smoker's car, Pioneer radio/cassette, sun roof, DM 8,000 o.n.o. Tel. 302 24 40 (anytime).
- **1980 Rover**, one year BFG, clean and reliable car, DM 1,800 o.n.o. Tel. LCpl Edwards on 309 35 70.
- **Datsun 280 ZX**, long BFG, classic car, must be seen, DM 6,500 o.n.o. Tel. LCpl Osborne on 309 35 70.
- **1981 Opel Kadett SR 1600**, low mileage, very good condition, Recaro sports seats, alloy wheels, radio/cassette, full BFG, DM 4,500 o.n.o. Tel. LCpl Morrice on 309 72 01 (day) or 309 72 60 (evenings).
- **1983 Volvo 360 GLS**, r.h.d., UK tax paid, BFG to mid 1990, radio/cassette, UK headlights, roof rack, towing hook, reliable car, DM 5,000. Tel. 305 02 17.
- **1981 (late) Opel Rekord 2.0 I E**, l.h.d., excellent condition, light green with green interior, DM 4,500 o.v.n.o. Tel. Brett on 365 72 02 or 309 26 81, or call at 126/8 Kladow AMQ, Gatow.
- **1977 VW Golf automatic**, four door, 75 h.p., silver, extras include heated rear window, roof spoiler, radio, rear wash/wipe, new exhaust, new brake master cylinder, has BFG pass certificate, DM 1,200 o.n.o., can be viewed at Alexander Barracks. Tel. Mr. Reece on 309 72 29 (work) or 365 41 16 (home).
- **Youth's ten speed racing bicycle**, good condition, DM 100. **Continental headlights** for 1982 Fiat 127, DM 50, 1985 Ford Fiesta, DM 60. Tel. 361 54 21.
- **Hotpoint fridge-freezer**, three years old, DM 400. **3-2-1 suite**, dark grey, DM 100. **Wall Unit**, pine effect, with drinks cabinet, bookshelves etc., DM 800. All items in extremely good condition. Tel. 309 34 21 (day) or 365 75 61 (evenings).
- **Three Whitney all wool double blankets**, hardly used, DM 25 each. **Go-kart**, in good working order, suit child 5-7 years, DM 60. **Portable typewriter**, very good condition, DM 90. Tel. 309 44 81.
- **Hitachi colour TV**, 26 inch, receives SSVc and German, very good condition, DM 100. Tel. 309 43 94 (work) or 372 28 41 (home).

Notice To Advertisers

The appearance of an advertisement in the Berlin Bulletin does not constitute a 'seal of approval' regarding the item or service advertised. Respondents to advertisements should take appropriate precautions before entering into any 'contract'.

A charge of DM 10 per entry is raised on Classified Advertisements. The Bulletin office is situated on the ground floor of Gloucester Block, HQ Berlin Infantry Brigade.

Advertising space is limited, and advertisers are asked to limit their entries to a maximum of 30 words per advertisement, otherwise it may be necessary to shorten them before printing.

Important Notice: Duty Travel on Berlin Public Transport Services

The tragic event which occurred recently at Wildenrath brings home to us the need to constantly review our security in an attempt to protect ourselves from the terrorist. In the light of this and other events, agreement has been reached with the Berlin Transport Authorities (BVG) to allow Service personnel travelling to and from duty to use BVG services free of charge whilst in civilian clothing. Personnel wishing to make use of this facility should show their Service ID card on boarding buses to the driver and to any ticket collector or inspector. No charge will then be levied.

It is emphasized that this facility is only available for journeys to and from duty and is NOT available to holders of Green and Orange Cards. Service personnel may not in future travel on BVG transport, including U-Bahn and S-Bahn lines in uniform. Any problems in gaining access to BVG transport should be reported to 62 Tpt & Mov Sqd RCT on 309 72 69.

**FOR ALL YOUR
CUSTOM FRAMING
NEEDS, VISIT THE
"FRIENDLY FRAME
SHOP" LOCATED
ON McNAIR
BARRACKS. FULL
SERVICE WITH
HUNDREDS OF
COMBINATIONS
TO CHOOSE
FROM!**



**COMMUNITY RECREATION
DIVISION, U.S. ARMY, BERLIN**

**TELEPHONE
819-9635/9198**

**PRESENT THIS AD FOR A 5% SERVICE
CHARGE DISCOUNT ON YOUR FIRST ORDER**